

Anti-Phospho-Synaptotagmin 1/2-Ser309/306 antibody (276-325 aa) (STJ90746)

STJ90746

GENERAL INFORMATION

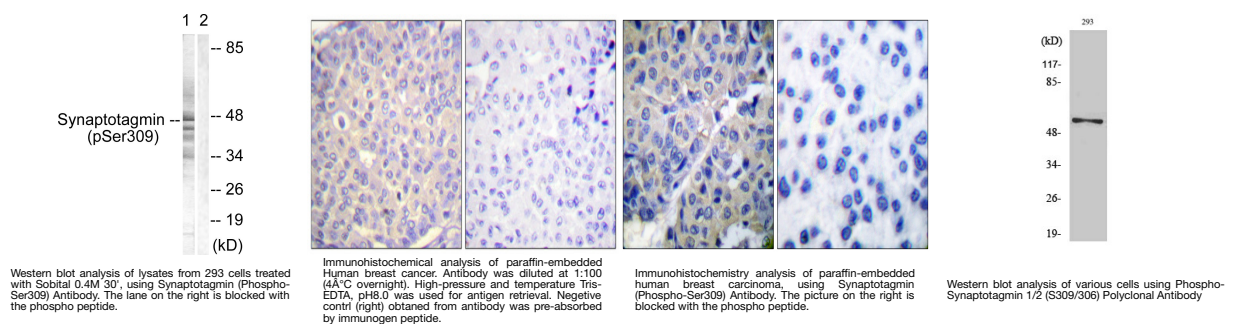
Product Type	Primary antibodies
Short Description	Rabbit polyclonal antibody anti-Phospho-Synaptotagmin-1 and Synaptotagmin-2-Ser309/306 (276-325 aa) is suitable for use in Western Blot, Immunohistochemistry, Immunofluorescence and ELISA research applications.
Applications	WB/IHC/IF/ELISA
Host/Source	Rabbit
Reactivity	Human/Mouse/Rat

PRODUCT PROPERTIES

Clonality	Polyclonal
Clone ID	
Concentration	1 mg/mL
Conjugation	Unconjugated
Purification	The antibody was affinity-purified from rabbit antiserum by affinity-chromatography using epitope-specific immunogen.
Dilution	WB 1:500-1:2000
Range	IHC 1:100-1:300 ELISA 1:10000 IF 1:50-200
Formulation	Liquid in PBS containing 50% Glycerol, 0.5% BSA and 0.02% Sodium Azide.
Isotype	IgG
Storage Instruction	Store at -20°C for up to 1 year from the date of receipt, and avoid repeat freeze-thaw cycles.

TARGET INFORMATION

Gene ID	127833 6857
Gene Symbol	SYT2 SYT1
Uniprot ID	SYT2_HUMAN SYT1_HUMAN
Immunogen	The antiserum was produced against synthesized peptide derived from the human Synaptotagmin around the phosphorylation site of Ser309 at the amino acid range 276-325
Immunogen Region	276-325 aa
Specificity	Phospho-Synaptotagmin 1/2 (S309/306) Polyclonal Antibody detects endogenous levels of Synaptotagmin 1/2 protein only when phosphorylated at S309/306.
Immunogen Sequence	



This product is suitable for in-vitro studies under the RESEARCH USE ONLY [RUO] licence. This product must not be used as for diagnostic or other medical purposes.
St John's Laboratory Ltd, Knowledge Dock Business Centre, University Way, London, E16 2RD | Tel: 0208 223 3081