

## Anti-Phospho-SMAD3-Ser425 antibody (376-425 aa) (STJ90745)

STJ90745

### GENERAL INFORMATION

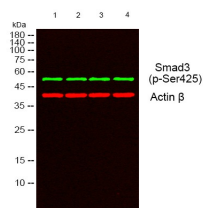
<b>Product Type</b>	Primary antibodies
<b>Short Description</b>	Rabbit polyclonal antibody anti-Phospho-Mothers against decapentaplegic homolog 3-Ser425 (376-425 aa) is suitable for use in Immunofluorescence, Western Blot, Immunohistochemistry and ELISA research applications.
<b>Applications</b>	IF/WB/IHC/ELISA
<b>Host/Source</b>	Rabbit
<b>Reactivity</b>	Human/Mouse/Rat

### PRODUCT PROPERTIES

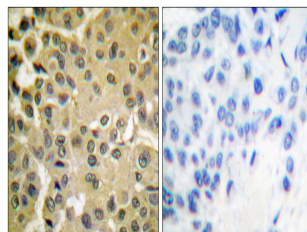
<b>Clonality</b>	Polyclonal
<b>Clone ID</b>	
<b>Concentration</b>	1 mg/mL
<b>Conjugation</b>	Unconjugated
<b>Purification</b>	The antibody was affinity-purified from rabbit antiserum by affinity-chromatography using epitope-specific immunogen.
<b>Dilution Range</b>	IF 1:50-200 WB 1:500-1:2000 IHC 1:100-1:300 ELISA 1:40000
<b>Formulation</b>	Liquid in PBS containing 50% Glycerol, 0.5% BSA and 0.02% Sodium Azide.
<b>Isotype</b>	IgG
<b>Storage Instruction</b>	Store at -20°C for up to 1 year from the date of receipt, and avoid repeat freeze-thaw cycles.

### TARGET INFORMATION

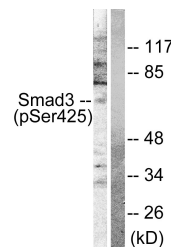
<b>Gene ID</b>	4088
<b>Gene Symbol</b>	SMAD3
<b>Uniprot ID</b>	SMAD3_HUMAN
<b>Immunogen</b>	The antiserum was produced against synthesized peptide derived from the human Smad3 around the phosphorylation site of Ser425 at the amino acid range 376-425
<b>Immunogen Region</b>	376-425 aa
<b>Specificity</b>	Phospho-Smad3 (S425) Polyclonal Antibody detects endogenous levels of Smad3 protein only when phosphorylated at S425.
<b>Immunogen Sequence</b>	



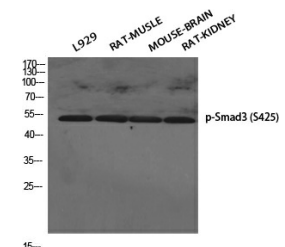
Western blot analysis of lysates from 1) L929, 2) RAT MUSCLE, 3) MOUSE-BRAIN, 4) RAT-KIDNEY cells. (Green) primary antibody was diluted at 1:1000, 4A°C over night, secondary antibody (cat: (NA) was diluted at 1:10000, 37A°C 1hour. (Red) Actin Beta monoclonal antibody (SB7) (cat: (STJ96930) antibody was diluted at 1:5000 as loading control, 4A°C over night, secondary antibody (cat: (NA) was diluted at 1:10000, 37A°C 1hour.



Immunohistochemistry analysis of paraffin-embedded human breast carcinoma, using Smad3 (Phospho-Ser425) Antibody. The picture on the right is blocked with the phospho peptide.



Western blot analysis of lysates from NIH/3T3 cells treated with IGF-1 100ng/ml 10', using Smad3 (Phospho-Ser425) Antibody. The lane on the right is blocked with the phospho peptide.



Western blot analysis of various cells using Phospho-Smad3 (S425) Polyclonal Antibody diluted at 1/14 500

This product is suitable for in-vitro studies under the RESEARCH USE ONLY [RUO] licence. This product must not be used as for diagnostic or other medical purposes.  
St John's Laboratory Ltd, Knowledge Dock Business Centre, University Way, London, E16 2RD | Tel: 0208 223 3081