

Anti-Phospho-PTPN11-Tyr542 antibody (508-557 aa) (STJ90741)

STJ90741

GENERAL INFORMATION

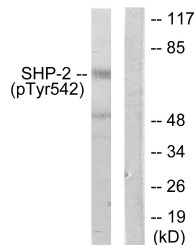
Product Type	Primary antibodies
Short Description	Rabbit polyclonal antibody anti-Phospho-Tyrosine-protein phosphatase non-receptor type 11-Tyr542 (508-557 aa) is suitable for use in Western Blot, Immunohistochemistry, Immunofluorescence and ELISA research applications.
Applications	WB/IHC/IF/ELISA
Host/Source	Rabbit
Reactivity	Human/Mouse/Rat

PRODUCT PROPERTIES

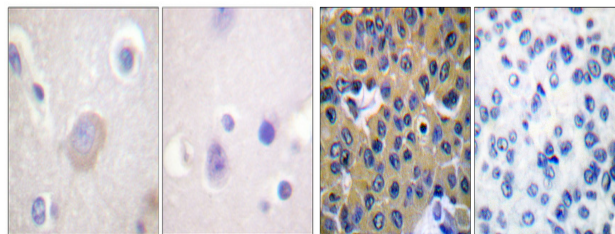
Clonality	Polyclonal
Clone ID	
Concentration	1 mg/mL
Conjugation	Unconjugated
Purification	The antibody was affinity-purified from rabbit antiserum by affinity-chromatography using epitope-specific immunogen.
Dilution Range	WB 1:500-1:2000 IHC 1:100-1:300 ELISA 1:40000 IF 1:50-200
Formulation	Liquid in PBS containing 50% Glycerol, 0.5% BSA and 0.02% Sodium Azide.
Isotype	IgG
Storage Instruction	Store at -20°C for up to 1 year from the date of receipt, and avoid repeat freeze-thaw cycles.

TARGET INFORMATION

Gene ID	5781
Gene Symbol	PTPN11
Uniprot ID	PTN11_HUMAN
Immunogen	The antiserum was produced against synthesized peptide derived from the human SHP-2 around the phosphorylation site of Tyr542 at the amino acid range 508-557
Immunogen Region	508-557 aa
Specificity	Phospho-SH-PTP2 (Y542) Polyclonal Antibody detects endogenous levels of SH-PTP2 protein only when phosphorylated at Y542.
Immunogen Sequence	

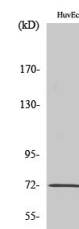


Western blot analysis of lysates from A431 cells, using SHP-2 (Phospho-Tyr542) Antibody. The lane on the right is blocked with the phospho peptide.



Immunohistochemical analysis of paraffin-embedded Human brain. Antibody was diluted at 1:100 (4A°C overnight). High-pressure and temperature Tris-EDTA, pH8.0 was used for antigen retrieval. Negative control (right) obtained from antibody was pre-absorbed by immunogen peptide.

Immunohistochemistry analysis of paraffin-embedded human breast carcinoma, using SHP-2 (Phospho-Tyr542) Antibody. The picture on the right is blocked with the phospho peptide.



Western blot analysis of various cells using Phospho-SH-PTP2 (Y542) Polyclonal Antibody diluted at 1/4 1000