

Anti-Phospho-GABRB1-Ser434 antibody (401-450 aa) (STJ90736)

STJ90736

GENERAL INFORMATION

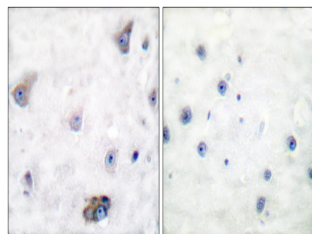
Product Type	Primary antibodies
Short Description	Rabbit polyclonal antibody anti-Phospho-Gamma-aminobutyric acid receptor subunit beta-1 receptor subunit beta-1-Ser434 (401-450 aa) is suitable for use in Western Blot, Immunohistochemistry, Immunofluorescence and ELISA research applications.
Applications	WB/IHC/IF/ELISA
Host/Source	Rabbit
Reactivity	Human/Mouse/Rat/Monkey

PRODUCT PROPERTIES

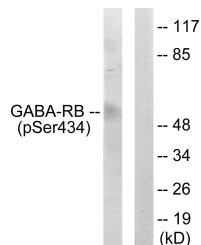
Clonality	Polyclonal
Clone ID	
Concentration	1 mg/mL
Conjugation	Unconjugated
Purification	The antibody was affinity-purified from rabbit antiserum by affinity-chromatography using epitope-specific immunogen.
Dilution Range	WB 1:500-1:2000 IHC 1:100-1:300 ELISA 1:40000 IF 1:50-200
Formulation	Liquid in PBS containing 50% Glycerol, 0.5% BSA and 0.02% Sodium Azide.
Isotype	IgG
Storage Instruction	Store at -20°C for up to 1 year from the date of receipt, and avoid repeat freeze-thaw cycles.

TARGET INFORMATION

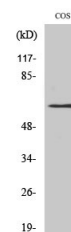
Gene ID	2560
Gene Symbol	GABRB1
Uniprot ID	GABRB1_HUMAN
Immunogen	The antiserum was produced against synthesized peptide derived from the human GABA-RB around the phosphorylation site of Ser434 at the amino acid range 401-450
Immunogen Region	401-450 aa
Specificity	Phospho-GABAA R Beta 1 (S434) Polyclonal Antibody detects endogenous levels of GABAA R Beta 1 protein only when phosphorylated at S434.
Immunogen Sequence	



Immunohistochemistry analysis of paraffin-embedded human brain using GABA-RB (Phospho-Ser434) Antibody. The picture on the right is blocked with the phospho peptide.



Western blot analysis of lysates from COS7 cells, using GABA-RB (Phospho-Ser434) Antibody. The lane on the right is blocked with the phospho peptide.



Western blot analysis of various cells using Phospho-GABAA R Beta 1 (S434) Polyclonal Antibody