

## Anti-Phospho-PTEN-Ser380/T382/T383 antibody (370-400 aa) (STJ90733)

STJ90733

### GENERAL INFORMATION

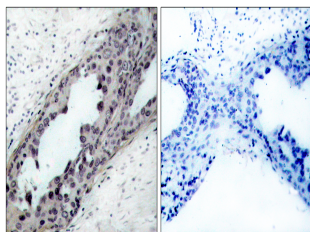
<b>Product Type</b>	Primary antibodies
<b>Short Description</b>	Rabbit polyclonal antibody anti-Phospho-Phosphatidylinositol 3, 4, 5-trisphosphate 3-phosphatase and dual-specificity protein phosphatase PTEN-Ser380/T382/T383 (370-400 aa) is suitable for use in Western Blot, Immunohistochemistry, Immunofluorescence
<b>Applications</b>	WB/IHC/IF/ELISA
<b>Host/Source</b>	Rabbit
<b>Reactivity</b>	Human/Mouse/Rat

### PRODUCT PROPERTIES

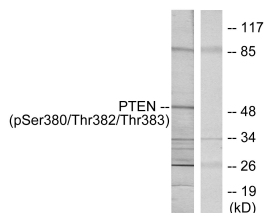
<b>Clonality</b>	Polyclonal
<b>Clone ID</b>	
<b>Concentration</b>	1 mg/mL
<b>Conjugation</b>	Unconjugated
<b>Purification</b>	The antibody was affinity-purified from rabbit antiserum by affinity-chromatography using epitope-specific immunogen.
<b>Dilution Range</b>	WB 1:500-1:2000 IHC 1:100-1:300 ELISA 1:20000 IF 1:50-200
<b>Formulation</b>	Liquid in PBS containing 50% Glycerol, 0.5% BSA and 0.02% Sodium Azide.
<b>Isotype</b>	IgG
<b>Storage Instruction</b>	Store at -20°C for up to 1 year from the date of receipt, and avoid repeat freeze-thaw cycles.

### TARGET INFORMATION

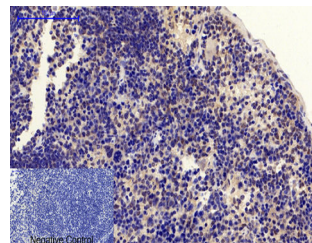
<b>Gene ID</b>	5728
<b>Gene Symbol</b>	PTEN
<b>Uniprot ID</b>	PTEN_HUMAN
<b>Immunogen</b>	The antiserum was produced against synthesized peptide derived from the human PTEN around the phosphorylation site of Ser380/Thr382/Thr383 at the amino acid range 370-400
<b>Immunogen Region</b>	370-400 aa
<b>Specificity</b>	Phospho-PTEN (S380/T382/T383) Polyclonal Antibody detects endogenous levels of PTEN protein only when phosphorylated at S380/T382/T383.
<b>Immunogen Sequence</b>	



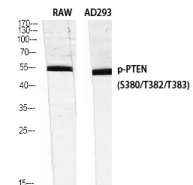
Immunohistochemistry analysis of paraffin-embedded human breast cancer, using PTEN (Phospho-Ser380/Thr382/Thr383) Antibody. The picture on the right is blocked with the PTEN (Phospho-Ser380/Thr382/Thr383) peptide.



Western blot analysis of PTEN (Phospho-Ser380/Thr382/Thr383) Antibody. The lane on the right is blocked with the PTEN (Phospho-Ser380/Thr382/Thr383) peptide.



Immunohistochemical analysis of paraffin-embedded mouse spleen tissue. 1. PTEN (phospho Ser380/T382/T383) Polyclonal Antibody was diluted at 1:200 (4A°C, overnight). 2. Sodium citrate pH 6.0 was used for antibody retrieval (>98A°C, 20min). 3. Secondary antibody was diluted at 1:200 (room temperature, 30min). Negative control was used by secondary antibody only.



Western blot analysis of RAW AD293 cells using Phospho-PTEN (S380/T382/T383) Polyclonal Antibody diluted at 1/4 1000

This product is suitable for in-vitro studies under the RESEARCH USE ONLY [RUO] licence. This product must not be used as for diagnostic or other medical purposes.  
St John's Laboratory Ltd, Knowledge Dock Business Centre, University Way, London, E16 2RD | Tel: 0208 223 3081