

Anti-Phospho-NBN-Ser278 antibody (251-300 aa) (STJ90727)

STJ90727

GENERAL INFORMATION

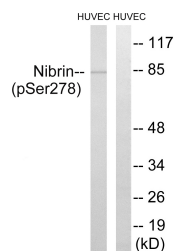
Product Type	Primary antibodies
Short Description	Rabbit polyclonal antibody anti-Phospho-Nibrin-Ser278 (251-300 aa) is suitable for use in Western Blot, Immunofluorescence and ELISA research applications.
Applications	WB/IF/ELISA
Host/Source	Rabbit
Reactivity	Human/Rat/Mouse

PRODUCT PROPERTIES

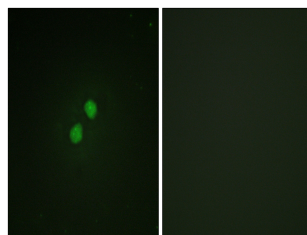
Clonality	Polyclonal
Clone ID	
Concentration	1 mg/mL
Conjugation	Unconjugated
Purification	The antibody was affinity-purified from rabbit antiserum by affinity-chromatography using epitope-specific immunogen.
Dilution Range	WB 1:500-1:2000 IF 1:200-1:1000 ELISA 1:10000
Formulation	Liquid in PBS containing 50% Glycerol, 0.5% BSA and 0.02% Sodium Azide.
Isotype	IgG
Storage Instruction	Store at -20°C for up to 1 year from the date of receipt, and avoid repeat freeze-thaw cycles.

TARGET INFORMATION

Gene ID	4683
Gene Symbol	NBN
Uniprot ID	NBN_HUMAN
Immunogen	The antiserum was produced against synthesized peptide derived from the human Nibrin around the phosphorylation site of Ser278 at the amino acid range 251-300
Immunogen Region	251-300 aa
Specificity	Phospho-Nibrin (S278) Polyclonal Antibody detects endogenous levels of Nibrin protein only when phosphorylated at S278.
Immunogen Sequence	



Western blot analysis of lysates from HUVEC cells treated with Forskolin 40nM 30', using Nibrin (Phospho-Ser278) Antibody. The lane on the right is blocked with the phospho peptide.



Immunofluorescence analysis of NIH/3T3 cells, using Nibrin (Phospho-Ser278) Antibody. The picture on the right is blocked with the phospho peptide.