

## Anti-Phospho-HSP90AB1-Ser226 antibody (201-250 aa) (STJ90725)

STJ90725

### GENERAL INFORMATION

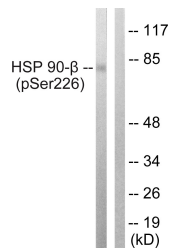
<b>Product Type</b>	Primary antibodies
<b>Short Description</b>	Rabbit polyclonal antibody anti-Phospho-Heat shock protein HSP 90-beta-Ser226 (201-250 aa) is suitable for use in Western Blot, Immunohistochemistry, Immunofluorescence and ELISA research applications.
<b>Applications</b>	WB/IHC/IF/ELISA
<b>Host/Source</b>	Rabbit
<b>Reactivity</b>	Human/Mouse/Rat

### PRODUCT PROPERTIES

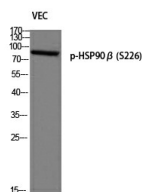
<b>Clonality</b>	Polyclonal
<b>Clone ID</b>	
<b>Concentration</b>	1 mg/mL
<b>Conjugation</b>	Unconjugated
<b>Purification</b>	The antibody was affinity-purified from rabbit antiserum by affinity-chromatography using epitope-specific immunogen.
<b>Dilution</b>	WB 1:500-1:2000
<b>Range</b>	IHC 1:100-1:300 IF 1:200-1:1000 ELISA 1:10000
<b>Formulation</b>	Liquid in PBS containing 50% Glycerol, 0.5% BSA and 0.02% Sodium Azide.
<b>Isotype</b>	IgG
<b>Storage Instruction</b>	Store at -20°C for up to 1 year from the date of receipt, and avoid repeat freeze-thaw cycles.

### TARGET INFORMATION

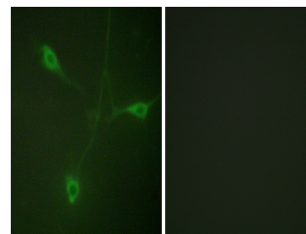
<b>Gene ID</b>	3326
<b>Gene Symbol</b>	HSP90AB1
<b>Uniprot ID</b>	HS90B_HUMAN
<b>Immunogen</b>	The antiserum was produced against synthesized peptide derived from the human HSP90B around the phosphorylation site of Ser226 at the amino acid range 201-250
<b>Immunogen Region</b>	201-250 aa
<b>Specificity</b>	Phospho-HSP90 Beta (S226) Polyclonal Antibody detects endogenous levels of HSP90 Beta protein only when phosphorylated at S226.
<b>Immunogen Sequence</b>	



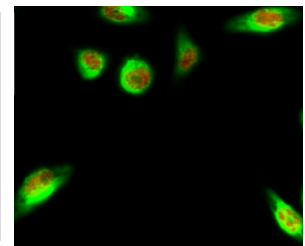
Western blot analysis of lysates from A549 cells treated with serum 20% 15', using HSP90B (Phospho-Ser226) Antibody. The lane on the right is blocked with the phospho peptide.



Western blot analysis of VEC using p-HSP90 Beta (S226) antibody.



Immunofluorescence analysis of NIH/3T3 cells, using HSP90B (Phospho-Ser226) Antibody. The picture on the right is blocked with the phospho peptide.



Immunofluorescence analysis of HeLa cell. 1, HSP90 Beta (phospho Ser226) Polyclonal Antibody (red) was diluted at 1:200 (4°C overnight). CK7 monoclonal antibody (12D7) (green) was diluted at 1:200 (4°C overnight). 2, Goat Anti Rabbit Alexa Fluor 594 Catalog: (NA was diluted at 1:1000 (room temperature, 50min)). Goat Anti Mouse Alexa Fluor 488 Catalog: (NA was diluted at 1:1000 (room temperature, 50min)).

This product is suitable for in-vitro studies under the RESEARCH USE ONLY [RUO] licence. This product must not be used as for diagnostic or other medical purposes.  
St John's Laboratory Ltd, Knowledge Dock Business Centre, University Way, London, E16 2RD | Tel: 0208 223 3081