

Anti-Phospho-Na⁺/K⁺-ATPase Alpha 1-Ser23 antibody (15-64 aa) (STJ90723)

STJ90723

GENERAL INFORMATION

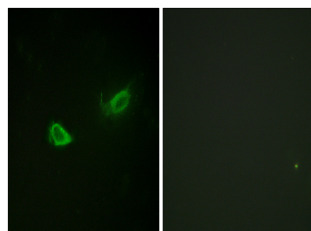
Product Type	Primary antibodies
Short Description	Rabbit polyclonal antibody anti-Phospho-ATP1A1-Ser23 (15-64 aa) is suitable for use in Western Blot, Immunofluorescence and ELISA research applications.
Applications	WB/IF/ELISA
Host/Source	Rabbit
Reactivity	Rat

PRODUCT PROPERTIES

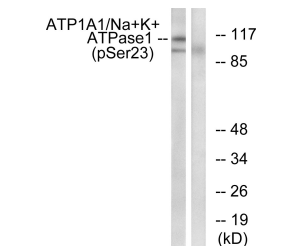
Clonality	Polyclonal
Clone ID	
Concentration	1 mg/mL
Conjugation	Unconjugated
Purification	The antibody was affinity-purified from rabbit antiserum by affinity-chromatography using epitope-specific immunogen.
Dilution Range	WB 1:500-1:2000 IF 1:100-1:300 ELISA 1:5000
Formulation	Liquid in PBS containing 50% Glycerol, 0.5% BSA and 0.02% Sodium Azide.
Isotype	IgG
Storage Instruction	Store at -20°C for up to 1 year from the date of receipt, and avoid repeat freeze-thaw cycles.

TARGET INFORMATION

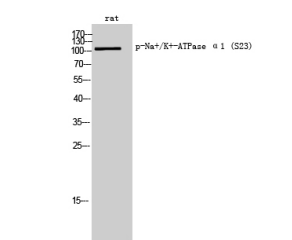
Gene ID	
Gene Symbol	
Uniprot ID	
Immunogen	The antiserum was produced against synthesized peptide derived from rat ATP1 alpha1/Na ⁺ /K ⁺ ATPase1 around the phosphorylation site of Ser23 at the amino acid range 15-64
Immunogen Region	15-64 aa
Specificity	Phospho-Na ⁺ /K ⁺ -ATPase Alpha 1 (S23) Polyclonal Antibody detects endogenous levels of Na ⁺ /K ⁺ -ATPase Alpha 1 protein only when phosphorylated at S23.
Immunogen Sequence	



Immunofluorescence analysis of NIH/3T3 cells, using ATP1 alpha1/Na⁺/K⁺ ATPase1 (Phospho-Ser23) Antibody. The picture on the right is blocked with the phospho peptide.



Western blot analysis of lysates from rat brain, using ATP1 alpha1/Na⁺/K⁺ ATPase1 (Phospho-Ser23) Antibody. The lane on the right is blocked with the phospho peptide.



Western blot analysis of rat cells using Phospho-Na⁺/K⁺-ATPase Alpha 1 (S23) Polyclonal Antibody

This product is suitable for in-vitro studies under the RESEARCH USE ONLY [RUO] licence. This product must not be used as for diagnostic or other medical purposes.
St John's Laboratory Ltd, Knowledge Dock Business Centre, University Way, London, E16 2RD | Tel: 0208 223 3081