

Anti-Phospho-MAPK8IP1-Thr103 antibody (69-118 aa) (STJ90715)

STJ90715

GENERAL INFORMATION

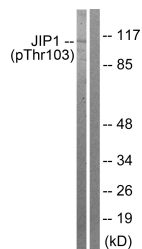
Product Type	Primary antibodies
Short Description	Rabbit polyclonal antibody anti-Phospho-C-Jun-amino-terminal kinase-interacting protein 1-Thr103 (69-118 aa) is suitable for use in Western Blot, Immunohistochemistry, Immunofluorescence and ELISA research applications.
Applications	WB/IHC/IF/ELISA
Host/Source	Rabbit
Reactivity	Human/Mouse/Rat

PRODUCT PROPERTIES

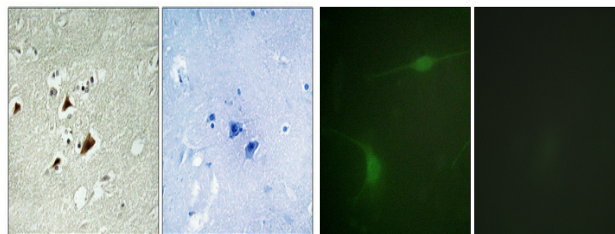
Clonality	Polyclonal
Clone ID	
Concentration	1 mg/mL
Conjugation	Unconjugated
Purification	The antibody was affinity-purified from rabbit antiserum by affinity-chromatography using epitope-specific immunogen.
Dilution Range	WB 1:500-1:2000 IHC 1:100-1:300 IF 1:200-1:1000 ELISA 1:5000
Formulation	Liquid in PBS containing 50% Glycerol, 0.5% BSA and 0.02% Sodium Azide.
Isotype	IgG
Storage Instruction	Store at -20°C for up to 1 year from the date of receipt, and avoid repeat freeze-thaw cycles.

TARGET INFORMATION

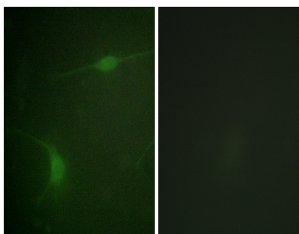
Gene ID	9479
Gene Symbol	MAPK8IP1
Uniprot ID	JIP1_HUMAN
Immunogen	The antiserum was produced against synthesized peptide derived from the human JIP1 around the phosphorylation site of Thr103 at the amino acid range 69-118
Immunogen Region	69-118 aa
Specificity	Phospho-JIP-1 (T103) Polyclonal Antibody detects endogenous levels of JIP-1 protein only when phosphorylated at T103.
Immunogen Sequence	



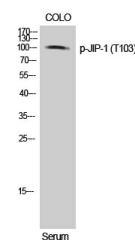
Western blot analysis of lysates from COLO205 cells treated with Serum 20% 15', using JIP1 (Phospho-Thr103) Antibody. The lane on the right is blocked with the phospho peptide.



Immunohistochemical analysis of paraffin-embedded Human brain. Antibody was diluted at 1:100 (4A°C overnight). High-pressure and temperature Tris-EDTA, pH8.0 was used for antigen retrieval. Negative control (right) obtained from antibody was pre-absorbed by immunogen peptide.



Immunofluorescence analysis of NIH/3T3 cells, using JIP1 (Phospho-Thr103) Antibody. The picture on the right is blocked with the phospho peptide.



Western blot analysis of COLO cells using Phospho-JIP-1 (T103) Polyclonal Antibody