

Anti-Phospho-KRT18-Ser52 antibody (21-70 aa) (STJ90707)

STJ90707

GENERAL INFORMATION

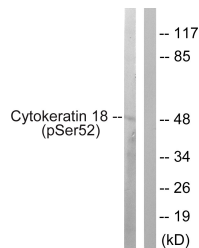
| | |
|--------------------------|---|
| Product Type | Primary antibodies |
| Short Description | Rabbit polyclonal antibody anti-Phospho-Keratin, type I cytoskeletal 18-Ser52 (21-70 aa) is suitable for use in Western Blot, Immunohistochemistry, Immunofluorescence and ELISA research applications. |
| Applications | WB/IHC/IF/ELISA |
| Host/Source | Rabbit |
| Reactivity | Human/Rat/Mouse |

PRODUCT PROPERTIES

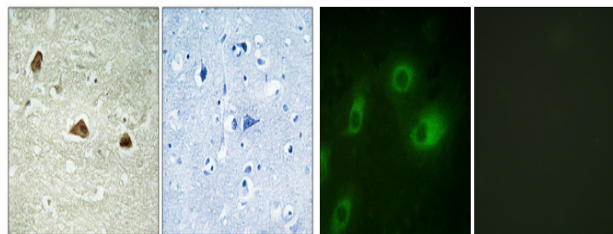
| | |
|----------------------------|---|
| Clonality | Polyclonal |
| Clone ID | |
| Concentration | 1 mg/mL |
| Conjugation | Unconjugated |
| Purification | The antibody was affinity-purified from rabbit antiserum by affinity-chromatography using epitope-specific immunogen. |
| Dilution | WB 1:500-1:2000 |
| Range | IHC 1:100-1:300 IF 1:200-1:1000 ELISA 1:10000 |
| Formulation | Liquid in PBS containing 50% Glycerol, 0.5% BSA and 0.02% Sodium Azide. |
| Isotype | IgG |
| Storage Instruction | Store at -20°C for up to 1 year from the date of receipt, and avoid repeat freeze-thaw cycles. |

TARGET INFORMATION

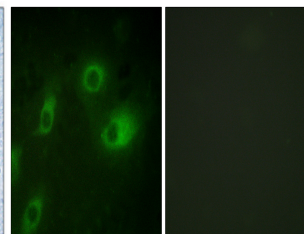
| | |
|---------------------------|---|
| Gene ID | 3875 |
| Gene Symbol | KRT18 |
| Uniprot ID | K1C18_HUMAN |
| Immunogen | The antiserum was produced against synthesized peptide derived from the human Keratin 18 around the phosphorylation site of Ser52 at the amino acid range 21-70 |
| Immunogen Region | 21-70 aa |
| Specificity | Phospho-Cytokeratin 18 (S52) Polyclonal Antibody detects endogenous levels of Cytokeratin 18 protein only when phosphorylated at S52. |
| Immunogen Sequence | |



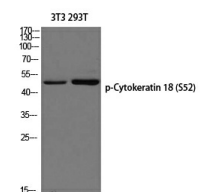
Western blot analysis of lysates from HepG2 cells, using Keratin 18 (Phospho-Ser52) Antibody. The lane on the right is blocked with the phospho peptide.



Immunohistochemical analysis of paraffin-embedded Human brain. Antibody was diluted at 1:100 (44°C overnight). High-pressure and temperature Tris-EDTA, pH8.0 was used for antigen retrieval. Negative control (right) obtained from antigen retrieval. Negative control (right) obtained from antigen retrieval. Negative control (right) obtained from antigen retrieval.



Immunofluorescence analysis of HeLa cells, using Keratin 18 (Phospho-Ser52) Antibody. The picture on the right is blocked with the phospho peptide.



Western blot analysis of 3T3 293T using p-Cytokeratin 18 (S52) antibody. Antibody was diluted at 1:500.

This product is suitable for in-vitro studies under the RESEARCH USE ONLY [RUO] licence. This product must not be used as for diagnostic or other medical purposes.
St John's Laboratory Ltd, Knowledge Dock Business Centre, University Way, London, E16 2RD | Tel: 0208 223 3081