

Anti-Phospho-PTPRC-Ser1007 antibody (981-1030 aa) (STJ90703)

STJ90703

GENERAL INFORMATION

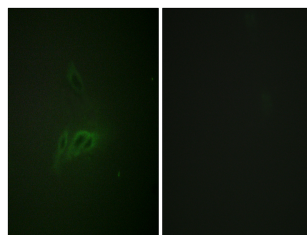
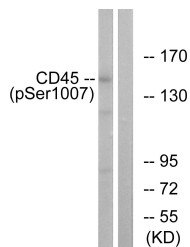
Product Type	Primary antibodies
Short Description	Rabbit polyclonal antibody anti-Phospho-Receptor-type tyrosine-protein phosphatase C-Ser1007 (981-1030 aa) is suitable for use in Western Blot, Immunofluorescence and ELISA research applications.
Applications	WB/IF/ELISA
Host/Source	Rabbit
Reactivity	Human/Mouse/Rat

PRODUCT PROPERTIES

Clonality	Polyclonal
Clone ID	
Concentration	1 mg/mL
Conjugation	Unconjugated
Purification	The antibody was affinity-purified from rabbit antiserum by affinity-chromatography using epitope-specific immunogen.
Dilution	WB 1:500-1:2000
Range	IF 1:200-1:1000 ELISA 1:5000
Formulation	Liquid in PBS containing 50% Glycerol, 0.5% BSA and 0.02% Sodium Azide.
Isotype	IgG
Storage Instruction	Store at -20°C for up to 1 year from the date of receipt, and avoid repeat freeze-thaw cycles.

TARGET INFORMATION

Gene ID	5788
Gene Symbol	PTPRC
Uniprot ID	PTPRC_HUMAN
Immunogen	The antiserum was produced against synthesized peptide derived from the human CD45 around the phosphorylation site of Ser1007 at the amino acid range 981-1030
Immunogen Region	981-1030 aa
Specificity	Phospho-CD45 (S1007) Polyclonal Antibody detects endogenous levels of CD45 protein only when phosphorylated at S1007.
Immunogen Sequence	



This product is suitable for in-vitro studies under the RESEARCH USE ONLY [RUO] licence. This product must not be used as for diagnostic or other medical purposes.
St John's Laboratory Ltd, Knowledge Dock Business Centre, University Way, London, E16 2RD | Tel: 0208 223 3081