

Anti-Phospho-CASP9-Tyr153 antibody (119-168 aa) (STJ90702)

STJ90702

GENERAL INFORMATION

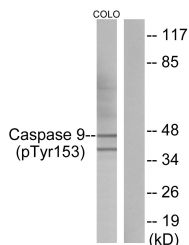
Product Type	Primary antibodies
Short Description	Rabbit polyclonal antibody anti-Phospho-Caspase-9-Tyr153 (119-168 aa) is suitable for use in Western Blot, Immunofluorescence and ELISA research applications.
Applications	WB/IF/ELISA
Host/Source	Rabbit
Reactivity	Human/Rat/Mouse

PRODUCT PROPERTIES

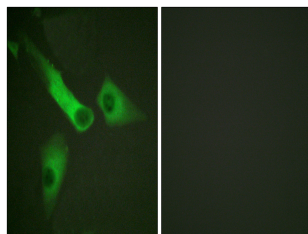
Clonality	Polyclonal
Clone ID	
Concentration	1 mg/mL
Conjugation	Unconjugated
Purification	The antibody was affinity-purified from rabbit antiserum by affinity-chromatography using epitope-specific immunogen.
Dilution Range	WB 1:500-1:2000 IF 1:200-1:1000 ELISA 1:10000
Formulation	Liquid in PBS containing 50% Glycerol, 0.5% BSA and 0.02% Sodium Azide.
Isotype	IgG
Storage Instruction	Store at -20°C for up to 1 year from the date of receipt, and avoid repeat freeze-thaw cycles.

TARGET INFORMATION

Gene ID	842
Gene Symbol	CASP9
Uniprot ID	CASP9_HUMAN
Immunogen	The antiserum was produced against synthesized peptide derived from the human Caspase 9 around the phosphorylation site of Tyr153 at the amino acid range 119-168
Immunogen Region	119-168 aa
Specificity	Phospho-Caspase-9 (Y153) Polyclonal Antibody detects endogenous levels of Caspase-9 protein only when phosphorylated at Y153.
Immunogen Sequence	



Western blot analysis of lysates from COLO205 cells, using Caspase 9 (Phospho-Tyr153) Antibody. The lane on the right is blocked with the phospho peptide.



Immunofluorescence analysis of HepG2 cells, using Caspase 9 (Phospho-Tyr153) Antibody. The picture on the right is blocked with the phospho peptide.