

Anti-Phospho-MYBL2-Ser577 antibody (551-600 aa) (STJ90700)

STJ90700

GENERAL INFORMATION

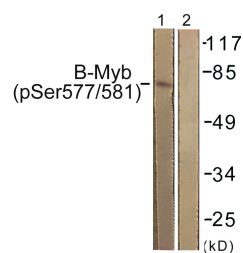
Product Type	Primary antibodies
Short Description	Rabbit polyclonal antibody anti-Phospho-Myb-related protein B-Ser577 (551-600 aa) is suitable for use in Western Blot, Immunofluorescence and ELISA research applications.
Applications	WB/IF/ELISA
Host/Source	Rabbit
Reactivity	Human/Mouse/Rat

PRODUCT PROPERTIES

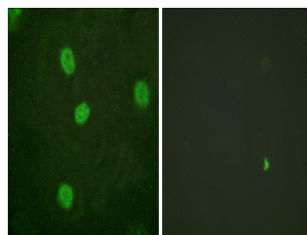
Clonality	Polyclonal
Clone ID	
Concentration	1 mg/mL
Conjugation	Unconjugated
Purification	The antibody was affinity-purified from rabbit antiserum by affinity-chromatography using epitope-specific immunogen.
Dilution Range	WB 1:500-1:2000 IF 1:200-1:1000 ELISA 1:40000
Formulation	Liquid in PBS containing 50% Glycerol, 0.5% BSA and 0.02% Sodium Azide.
Isotype	IgG
Storage Instruction	Store at -20°C for up to 1 year from the date of receipt, and avoid repeat freeze-thaw cycles.

TARGET INFORMATION

Gene ID	4605
Gene Symbol	MYBL2
Uniprot ID	MYBB_HUMAN
Immunogen	The antiserum was produced against synthesized peptide derived from the human B-Myb around the phosphorylation site of Ser577/581 at the amino acid range 551-600
Immunogen Region	551-600 aa
Specificity	Phospho-B-Myb (S577) Polyclonal Antibody detects endogenous levels of B-Myb protein only when phosphorylated at S577.
Immunogen Sequence	



Western blot analysis of lysates from K562 cells, using B-Myb (Phospho-Ser577/581) Antibody. The lane on the right is blocked with the phospho peptide.



Immunofluorescence analysis of HeLa cells, using B-Myb (Phospho-Ser577/581) Antibody. The picture on the right is blocked with the phospho peptide.