

Anti-Phospho-TEK-Tyr1108 antibody (1074-1123 aa) (STJ90693)

STJ90693

GENERAL INFORMATION

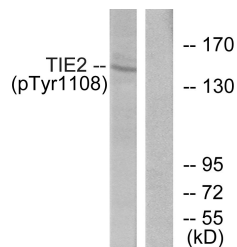
Product Type	Primary antibodies
Short Description	Rabbit polyclonal antibody anti-Phospho-Angiopoietin-1 receptor-Tyr1108 (1074-1123 aa) is suitable for use in Western Blot, ELISA and Immunohistochemistry research applications.
Applications	WB/ELISA/IHC
Host/Source	Rabbit
Reactivity	Human/Mouse

PRODUCT PROPERTIES

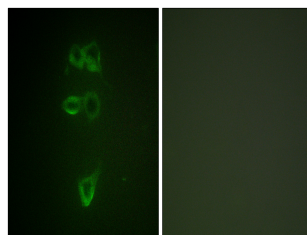
Clonality	Polyclonal
Clone ID	
Concentration	1 mg/mL
Conjugation	Unconjugated
Purification	The antibody was affinity-purified from rabbit antiserum by affinity-chromatography using epitope-specific immunogen.
Dilution Range	WB 1:500-2000 IHC-P 1:50-300 ELISA 2000-20000
Formulation	Liquid in PBS containing 50% Glycerol, 0.5% BSA and 0.02% Sodium Azide.
Isotype	IgG
Storage Instruction	Store at -20°C for up to 1 year from the date of receipt, and avoid repeat freeze-thaw cycles.

TARGET INFORMATION

Gene ID	7010
Gene Symbol	TEK
Uniprot ID	TIE2_HUMAN
Immunogen	The antiserum was produced against synthesized peptide derived from the human TIE2 around the phosphorylation site of Tyr1108 at the amino acid range 1074-1123
Immunogen Region	1074-1123 aa
Specificity	Phospho-Tie-2 (Y1108) Polyclonal Antibody detects endogenous levels of Tie-2 protein only when phosphorylated at Y1108.
Immunogen Sequence	



Western blot analysis of lysates from NIH/3T3 cells, using TIE2 (Phospho-Tyr1108) Antibody. The lane on the right is blocked with the phospho peptide.



Immunofluorescence analysis of HepG2 cells, using TIE2 (Phospho-Tyr1108) Antibody. The picture on the right is blocked with the phospho peptide.