

Anti-Phospho-PGR-Ser400 antibody (371-420 aa) (STJ90692)

STJ90692

GENERAL INFORMATION

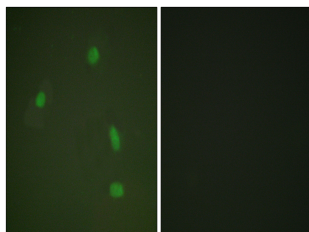
Product Type	Primary antibodies
Short Description	Rabbit polyclonal antibody anti-Phospho-Progesterone receptor-Ser400 (371-420 aa) is suitable for use in Western Blot and Immunohistochemistry research applications.
Applications	WB/IHC
Host/Source	Rabbit
Reactivity	Human/Rat/Mouse

PRODUCT PROPERTIES

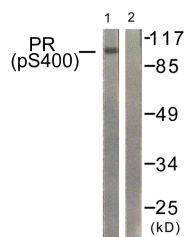
Clonality	Polyclonal
Clone ID	
Concentration	1 mg/mL
Conjugation	Unconjugated
Purification	The antibody was affinity-purified from rabbit antiserum by affinity-chromatography using epitope-specific immunogen.
Dilution Range	WB 1:500-2000 IHC-P 1:50-300
Formulation	Liquid in PBS containing 50% Glycerol, 0.5% BSA and 0.02% Sodium Azide.
Isotype	IgG
Storage	Store at -20°C for up to 1 year from the date of receipt, and avoid repeat freeze-thaw cycles.
Instruction	

TARGET INFORMATION

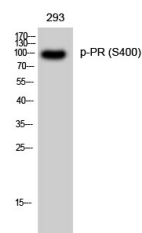
Gene ID	5241
Gene Symbol	PGR
Uniprot ID	PRGR_HUMAN
Immunogen	The antiserum was produced against synthesized peptide derived from the human Progesterone Receptor around the phosphorylation site of Ser400 at the amino acid range 371-420
Immunogen Region	371-420 aa
Specificity	Phospho-PR (S400) Polyclonal Antibody detects endogenous levels of PR protein only when phosphorylated at S400.
Immunogen Sequence	



Immunofluorescence analysis of A549 cells, using Progesterone Receptor (Phospho-Ser400) Antibody. The picture on the right is blocked with the phospho peptide.



Western blot analysis of lysates from 293 cells treated with heat shock, using Progesterone Receptor (Phospho-Ser400) Antibody. The lane on the right is blocked with the phospho peptide.



Western blot analysis of 293 cells using Phospho-PR (S400) Polyclonal Antibody