

Anti-Phospho-PGR-Ser294 antibody (261-310 aa) (STJ90691)

STJ90691

GENERAL INFORMATION

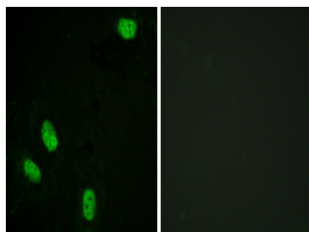
Product Type	Primary antibodies
Short Description	Rabbit polyclonal antibody anti-Phospho-Progesterone receptor-Ser294 (261-310 aa) is suitable for use in Western Blot and Immunohistochemistry research applications.
Applications	WB/IHC
Host/Source	Rabbit
Reactivity	Human/Mouse/Rat

PRODUCT PROPERTIES

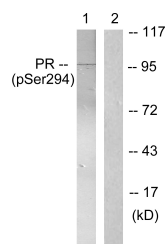
Clonality	Polyclonal
Clone ID	
Concentration	1 mg/mL
Conjugation	Unconjugated
Purification	The antibody was affinity-purified from rabbit antiserum by affinity-chromatography using epitope-specific immunogen.
Dilution Range	WB 1:500-2000 IHC-P 1:50-300
Formulation	Liquid in PBS containing 50% Glycerol, 0.5% BSA and 0.02% Sodium Azide.
Isotype	IgG
Storage	Store at -20°C for up to 1 year from the date of receipt, and avoid repeat freeze-thaw cycles.
Instruction	

TARGET INFORMATION

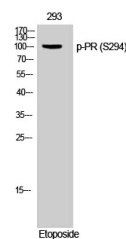
Gene ID	5241
Gene Symbol	PGR
Uniprot ID	PRGR_HUMAN
Immunogen	The antiserum was produced against synthesized peptide derived from the human Progesterone Receptor around the phosphorylation site of Ser294 at the amino acid range 261-310
Immunogen Region	261-310 aa
Specificity	Phospho-PR (S294) Polyclonal Antibody detects endogenous levels of PR protein only when phosphorylated at S294.
Immunogen Sequence	



Immunofluorescence analysis of HeLa cells, using Progesterone Receptor (Phospho-Ser294) Antibody. The picture on the right is blocked with the phospho peptide.



Western blot analysis of lysates from 293 cells treated with Etoposide 25uM 60', using Progesterone Receptor (Phospho-Ser294) Antibody. The lane on the right is blocked with the phospho peptide.



Western blot analysis of 293 cells using Phospho-PR (S294) Polyclonal Antibody