

Anti-Phospho-PECAM1-Tyr713 antibody (686-735 aa) (STJ90690)

STJ90690

GENERAL INFORMATION

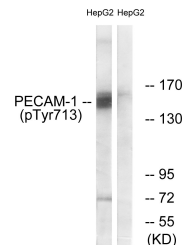
Product Type	Primary antibodies
Short Description	Rabbit polyclonal antibody anti-Phospho-Platelet endothelial cell adhesion molecule-Tyr713 (686-735 aa) is suitable for use in Western Blot, Immunohistochemistry, Immunofluorescence and ELISA research applications.
Applications	WB/IHC/IF/ELISA
Host/Source	Rabbit
Reactivity	Human/Mouse

PRODUCT PROPERTIES

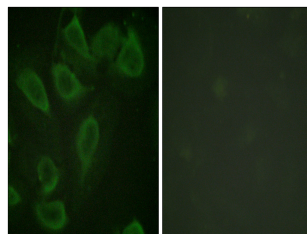
Clonality	Polyclonal
Clone ID	
Concentration	1 mg/mL
Conjugation	Unconjugated
Purification	The antibody was affinity-purified from rabbit antiserum by affinity-chromatography using epitope-specific immunogen.
Dilution Range	WB 1:500-1:2000 IHC 1:100-1:300 IF 1:200-1:1000 ELISA 1:20000
Formulation	Liquid in PBS containing 50% Glycerol, 0.5% BSA and 0.02% Sodium Azide.
Isotype	IgG
Storage Instruction	Store at -20°C for up to 1 year from the date of receipt, and avoid repeat freeze-thaw cycles.

TARGET INFORMATION

Gene ID	5175
Gene Symbol	PECAM1
Uniprot ID	PECA1_HUMAN
Immunogen	The antiserum was produced against synthesized peptide derived from the human PECAM-1 around the phosphorylation site of Tyr713 at the amino acid range 686-735
Immunogen Region	686-735 aa
Specificity	Phospho-CD31 (Y713) Polyclonal Antibody detects endogenous levels of CD31 protein only when phosphorylated at Y713.
Immunogen Sequence	



Western blot analysis of lysates from HepG2 cells, using PECAM-1 (Phospho-Tyr713) Antibody. The lane on the right is blocked with the phospho peptide.



Immunofluorescence analysis of HeLa cells, using PECAM-1 (Phospho-Tyr713) Antibody. The picture on the right is blocked with the phospho peptide.