

## Anti-Phospho-FGFR1-Tyr654 antibody (626-675 aa) (STJ90688)

STJ90688

### GENERAL INFORMATION

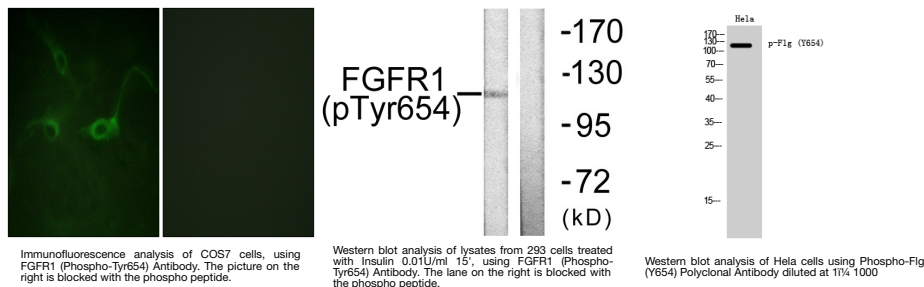
<b>Product Type</b>	Primary antibodies
<b>Short Description</b>	Rabbit polyclonal antibody anti-Phospho-Fibroblast growth factor receptor 1-Tyr654 (626-675 aa) is suitable for use in Western Blot, Immunofluorescence and ELISA research applications.
<b>Applications</b>	WB/IF/ELISA
<b>Host/Source</b>	Rabbit
<b>Reactivity</b>	Human/Mouse/Rat

### PRODUCT PROPERTIES

<b>Clonality</b>	Polyclonal
<b>Clone ID</b>	
<b>Concentration</b>	1 mg/mL
<b>Conjugation</b>	Unconjugated
<b>Purification</b>	The antibody was affinity-purified from rabbit antiserum by affinity-chromatography using epitope-specific immunogen.
<b>Dilution Range</b>	WB 1:500-1:2000 IF 1:200-1:1000 ELISA 1:20000
<b>Formulation</b>	Liquid in PBS containing 50% Glycerol, 0.5% BSA and 0.02% Sodium Azide.
<b>Isotype</b>	IgG
<b>Storage Instruction</b>	Store at -20°C for up to 1 year from the date of receipt, and avoid repeat freeze-thaw cycles.

### TARGET INFORMATION

<b>Gene ID</b>	2260
<b>Gene Symbol</b>	FGFR1
<b>Uniprot ID</b>	FGFR1_HUMAN
<b>Immunogen</b>	The antiserum was produced against synthesized peptide derived from the human FGFR1 around the phosphorylation site of Tyr654 at the amino acid range 626-675
<b>Immunogen Region</b>	626-675 aa
<b>Specificity</b>	Phospho-Fig (Y654) Polyclonal Antibody detects endogenous levels of Fig protein only when phosphorylated at Y654.
<b>Immunogen Sequence</b>	



This product is suitable for in-vitro studies under the RESEARCH USE ONLY [RUO] licence. This product must not be used as for diagnostic or other medical purposes.  
St John's Laboratory Ltd, Knowledge Dock Business Centre, University Way, London, E16 2RD | Tel: 0208 223 3081