

Anti-Phospho-FGFR1-Tyr154 antibody (121-170 aa) (STJ90678)

STJ90678

GENERAL INFORMATION

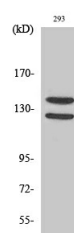
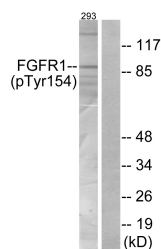
Product Type	Primary antibodies
Short Description	Rabbit polyclonal antibody anti-Phospho-Fibroblast growth factor receptor 1-Tyr154 (121-170 aa) is suitable for use in Western Blot, Immunofluorescence and ELISA research applications.
Applications	WB/IF/ELISA
Host/Source	Rabbit
Reactivity	Human/Mouse/Rat

PRODUCT PROPERTIES

Clonality	Polyclonal
Clone ID	
Concentration	1 mg/mL
Conjugation	Unconjugated
Purification	The antibody was affinity-purified from rabbit antiserum by affinity-chromatography using epitope-specific immunogen.
Dilution Range	WB 1:500-1:2000 IF 1:200-1:1000 ELISA 1:40000
Formulation	Liquid in PBS containing 50% Glycerol, 0.5% BSA and 0.02% Sodium Azide.
Isotype	IgG
Storage Instruction	Store at -20°C for up to 1 year from the date of receipt, and avoid repeat freeze-thaw cycles.

TARGET INFORMATION

Gene ID	2260
Gene Symbol	FGFR1
Uniprot ID	FGFR1_HUMAN
Immunogen	The antiserum was produced against synthesized peptide derived from the human FGFR1 around the phosphorylation site of Tyr154 at the amino acid range 121-170
Immunogen Region	121-170 aa
Specificity	Phospho-Fig (Y154) Polyclonal Antibody detects endogenous levels of Fig protein only when phosphorylated at Y154.
Immunogen Sequence	



Western blot analysis of lysates from 293 cells, using FGFR1 (Phospho-Tyr154) Antibody. The lane on the right is blocked with the phospho peptide.

Western blot analysis of various cells using Phospho-Fig (Y154) Polyclonal Antibody