

Anti-Phospho-RPS6KA5-Ser376 antibody (343-392 aa) (STJ90677)

STJ90677

GENERAL INFORMATION

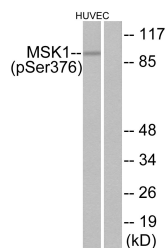
Product Type	Primary antibodies
Short Description	Rabbit polyclonal antibody anti-Phospho-Ribosomal protein S6 kinase alpha-5-Ser376 (343-392 aa) is suitable for use in Western Blot and Immunohistochemistry research applications.
Applications	WB/IHC
Host/Source	Rabbit
Reactivity	Human/Mouse

PRODUCT PROPERTIES

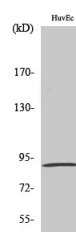
Clonality	Polyclonal
Clone ID	
Concentration	1 mg/mL
Conjugation	Unconjugated
Purification	The antibody was affinity-purified from rabbit antiserum by affinity-chromatography using epitope-specific immunogen.
Dilution Range	WB 1:500-2000 IHC-P 1:50-300
Formulation	Liquid in PBS containing 50% Glycerol, 0.5% BSA and 0.02% Sodium Azide.
Isotype	IgG
Storage	Store at -20°C for up to 1 year from the date of receipt, and avoid repeat freeze-thaw cycles.
Instruction	

TARGET INFORMATION

Gene ID	9252
Gene Symbol	RPS6KA5
Uniprot ID	KS6A5_HUMAN
Immunogen	The antiserum was produced against synthesized peptide derived from the human MSK1 around the phosphorylation site of Ser376 at the amino acid range 343-392
Immunogen Region	343-392 aa
Specificity	Phospho-MSK1 (S376) Polyclonal Antibody detects endogenous levels of MSK1 protein only when phosphorylated at S376.
Immunogen Sequence	



Western blot analysis of lysates from HUVEC cells treated with PMA 125ng/ml 30', using MSK1 (Phospho-Ser376) Antibody. The lane on the right is blocked with the phospho peptide.



Western blot analysis of various cells using Phospho-MSK1 (S376) Polyclonal Antibody diluted at 1:1000