

Anti-Phospho-RAF1-Ser338 antibody (305-354 aa) (STJ90676)

STJ90676

GENERAL INFORMATION

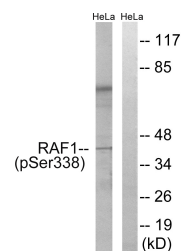
| | |
|--------------------------|---|
| Product Type | Primary antibodies |
| Short Description | Rabbit polyclonal antibody anti-Phospho-RAF proto-oncogene serine/threonine-protein kinase-Ser338 (305-354 aa) is suitable for use in Western Blot, ELISA and Immunohistochemistry research applications. |
| Applications | WB/ELISA/IHC |
| Host/Source | Rabbit |
| Reactivity | Human/Mouse/Rat |

PRODUCT PROPERTIES

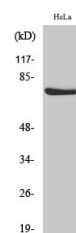
| | |
|----------------------------|---|
| Clonality | Polyclonal |
| Clone ID | |
| Concentration | 1 mg/mL |
| Conjugation | Unconjugated |
| Purification | The antibody was affinity-purified from rabbit antiserum by affinity-chromatography using epitope-specific immunogen. |
| Dilution | WB 1:500-2000 |
| Range | IHC-P 1:50-300 ELISA 2000-20000 |
| Formulation | Liquid in PBS containing 50% Glycerol, 0.5% BSA and 0.02% Sodium Azide. |
| Isotype | IgG |
| Storage Instruction | Store at -20°C for up to 1 year from the date of receipt, and avoid repeat freeze-thaw cycles. |

TARGET INFORMATION

| | |
|---------------------------|---|
| Gene ID | 5894 |
| Gene Symbol | RAF1 |
| Uniprot ID | RAF1_HUMAN |
| Immunogen | The antiserum was produced against synthesized peptide derived from the human C-RAF around the phosphorylation site of Ser338 at the amino acid range 305-354 |
| Immunogen Region | 305-354 aa |
| Specificity | Phospho-Raf-1 (S338) Polyclonal Antibody detects endogenous levels of Raf-1 protein only when phosphorylated at S338. |
| Immunogen Sequence | |



Western blot analysis of lysates from HeLa cells treated with paclitaxel 1uM 24h, using C-RAF (Phospho-Ser338) Antibody. The lane on the right is blocked with the phospho peptide.



Western blot analysis of various cells using Phospho-Raf-1 (S338) Polyclonal Antibody