

Anti-Phospho-HDAC7-Ser155 antibody (121-170 aa) (STJ90655)

STJ90655

GENERAL INFORMATION

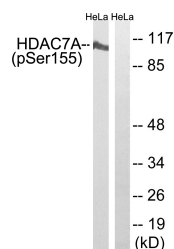
Product Type	Primary antibodies
Short Description	Rabbit polyclonal antibody anti-Phospho-Histone deacetylase 7-Ser155 (121-170 aa) is suitable for use in Western Blot and ELISA research applications.
Applications	WB/ELISA
Host/Source	Rabbit
Reactivity	Human/Mouse/Rat

PRODUCT PROPERTIES

Clonality	Polyclonal
Clone ID	
Concentration	1 mg/mL
Conjugation	Unconjugated
Purification	The antibody was affinity-purified from rabbit antiserum by affinity-chromatography using epitope-specific immunogen.
Dilution Range	WB 1:500-1:2000 ELISA 1:40000
Formulation	Liquid in PBS containing 50% Glycerol, 0.5% BSA and 0.02% Sodium Azide.
Isotype	IgG
Storage Instruction	Store at -20°C for up to 1 year from the date of receipt, and avoid repeat freeze-thaw cycles.

TARGET INFORMATION

Gene ID	51564
Gene Symbol	HDAC7
Uniprot ID	HDAC7_HUMAN
Immunogen	The antiserum was produced against synthesized peptide derived from the human HDAC7A around the phosphorylation site of Ser155 at the amino acid range 121-170
Immunogen Region	121-170 aa
Specificity	Phospho-HDAC7 (S155) Polyclonal Antibody detects endogenous levels of HDAC7 protein only when phosphorylated at S155.
Immunogen Sequence	



Western blot analysis of lysates from HeLa cells, using HDAC7A (Phospho-Ser155) Antibody. The lane on the right is blocked with the phospho peptide.

This product is suitable for in-vitro studies under the RESEARCH USE ONLY [RUO] licence. This product must not be used as for diagnostic or other medical purposes.
St John's Laboratory Ltd, Knowledge Dock Business Centre, University Way, London, E16 2RD | Tel: 0208 223 3081