

## Anti-Phospho-GRIN2B-Ser1303 antibody (1269-1318 aa) (STJ90653)

STJ90653

### GENERAL INFORMATION

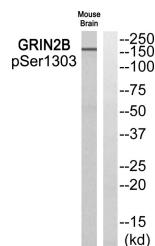
<b>Product Type</b>	Primary antibodies
<b>Short Description</b>	Rabbit polyclonal antibody anti-Phospho-Glutamate receptor ionotropic, NMDA 2B-Ser1303 (1269-1318 aa) is suitable for use in Western Blot and ELISA research applications.
<b>Applications</b>	WB/ELISA
<b>Host/Source</b>	Rabbit
<b>Reactivity</b>	Human/Mouse/Rat

### PRODUCT PROPERTIES

<b>Clonality</b>	Polyclonal
<b>Clone ID</b>	
<b>Concentration</b>	1 mg/mL
<b>Conjugation</b>	Unconjugated
<b>Purification</b>	The antibody was affinity-purified from rabbit antiserum by affinity-chromatography using epitope-specific immunogen.
<b>Dilution Range</b>	WB 1:500-1:2000 ELISA 1:40000
<b>Formulation</b>	Liquid in PBS containing 50% Glycerol, 0.5% BSA and 0.02% Sodium Azide.
<b>Isotype</b>	IgG
<b>Storage</b>	Store at -20°C for up to 1 year from the date of receipt, and avoid repeat freeze-thaw cycles.
<b>Instruction</b>	

### TARGET INFORMATION

<b>Gene ID</b>	2904
<b>Gene Symbol</b>	GRIN2B
<b>Uniprot ID</b>	NMDE2_HUMAN
<b>Immunogen</b>	The antiserum was produced against synthesized peptide derived from the human GRIN2B around the phosphorylation site of Ser1303 at the amino acid range 1269-1318
<b>Immunogen Region</b>	1269-1318 aa
<b>Specificity</b>	Phospho-NMDA Epsilon 2 (S1303) Polyclonal Antibody detects endogenous levels of NMDA Epsilon 2 protein only when phosphorylated at S1303.
<b>Immunogen Sequence</b>	



Western blot analysis of GRIN2B (Phospho-Ser1303) Antibody. The lane on the right is blocked with the GRIN2B (Phospho-Ser1303) peptide.