

## Anti-Phospho-TP63-Ser395 antibody (361-410 aa) (STJ90646)

STJ90646

### GENERAL INFORMATION

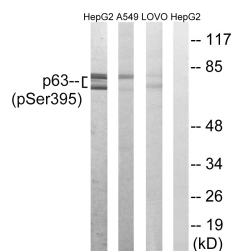
|                          |                                                                                                                                                   |
|--------------------------|---------------------------------------------------------------------------------------------------------------------------------------------------|
| <b>Product Type</b>      | Primary antibodies                                                                                                                                |
| <b>Short Description</b> | Rabbit polyclonal antibody anti-Phospho-Tumor protein 63-Ser395 (361-410 aa) is suitable for use in Western Blot and ELISA research applications. |
| <b>Applications</b>      | WB/ELISA                                                                                                                                          |
| <b>Host/Source</b>       | Rabbit                                                                                                                                            |
| <b>Reactivity</b>        | Human/Mouse/Rat                                                                                                                                   |

### PRODUCT PROPERTIES

|                       |                                                                                                                       |
|-----------------------|-----------------------------------------------------------------------------------------------------------------------|
| <b>Clonality</b>      | Polyclonal                                                                                                            |
| <b>Clone ID</b>       |                                                                                                                       |
| <b>Concentration</b>  | 1 mg/mL                                                                                                               |
| <b>Conjugation</b>    | Unconjugated                                                                                                          |
| <b>Purification</b>   | The antibody was affinity-purified from rabbit antiserum by affinity-chromatography using epitope-specific immunogen. |
| <b>Dilution Range</b> | WB 1:500-1:2000<br>ELISA 1:40000                                                                                      |
| <b>Formulation</b>    | Liquid in PBS containing 50% Glycerol, 0.5% BSA and 0.02% Sodium Azide.                                               |
| <b>Isotype</b>        | IgG                                                                                                                   |
| <b>Storage</b>        | Store at -20°C for up to 1 year from the date of receipt, and avoid repeat freeze-thaw cycles.                        |
| <b>Instruction</b>    |                                                                                                                       |

### TARGET INFORMATION

|                           |                                                                                                                                                             |
|---------------------------|-------------------------------------------------------------------------------------------------------------------------------------------------------------|
| <b>Gene ID</b>            | 8626                                                                                                                                                        |
| <b>Gene Symbol</b>        | TP63                                                                                                                                                        |
| <b>Uniprot ID</b>         | P63_HUMAN                                                                                                                                                   |
| <b>Immunogen</b>          | The antiserum was produced against synthesized peptide derived from the human p63 around the phosphorylation site of Ser395 at the amino acid range 361-410 |
| <b>Immunogen Region</b>   | 361-410 aa                                                                                                                                                  |
| <b>Specificity</b>        | Phospho-p63 (S395) Polyclonal Antibody detects endogenous levels of p63 protein only when phosphorylated at S395.                                           |
| <b>Immunogen Sequence</b> |                                                                                                                                                             |



Western blot analysis of lysates from LOVO cells treated with nocodazole 1ug/ml 18h and HepG2 cells treated with nocodazole 1ug/ml 18h, using p63 (Phospho-Ser395) Antibody. The blot shows a band at approximately 117 kDa for p63 (pSer395) in the HepG2 and A549 lanes, and a band at approximately 85 kDa in the LOVO lane. The right lane is blocked with the phospho peptide.

This product is suitable for in-vitro studies under the RESEARCH USE ONLY [RUO] licence. This product must not be used as for diagnostic or other medical purposes.  
St John's Laboratory Ltd, Knowledge Dock Business Centre, University Way, London, E16 2RD | Tel: 0208 223 3081