

Anti-Phospho-TAL1-Ser122 antibody (96-145 aa) (STJ90638)

STJ90638

GENERAL INFORMATION

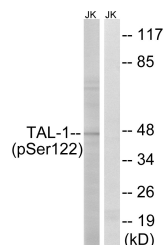
Product Type	Primary antibodies
Short Description	Rabbit polyclonal antibody anti-Phospho-T-cell acute lymphocytic leukemia protein 1-Ser122 (96-145 aa) is suitable for use in Western Blot, Immunohistochemistry, Immunofluorescence and ELISA research applications.
Applications	WB/IHC/IF/ELISA
Host/Source	Rabbit
Reactivity	Human/Mouse

PRODUCT PROPERTIES

Clonality	Polyclonal
Clone ID	
Concentration	1 mg/mL
Conjugation	Unconjugated
Purification	The antibody was affinity-purified from rabbit antiserum by affinity-chromatography using epitope-specific immunogen.
Dilution	WB 1:500-1:2000
Range	IHC 1:100-1:300 ELISA 1:10000 IF 1:50-200
Formulation	Liquid in PBS containing 50% Glycerol, 0.5% BSA and 0.02% Sodium Azide.
Isotype	IgG
Storage Instruction	Store at -20°C for up to 1 year from the date of receipt, and avoid repeat freeze-thaw cycles.

TARGET INFORMATION

Gene ID	6886
Gene Symbol	TAL1
Uniprot ID	TAL1_HUMAN
Immunogen	The antiserum was produced against synthesized peptide derived from the human TAL-1 around the phosphorylation site of Ser122 at the amino acid range 96-145
Immunogen Region	96-145 aa
Specificity	Phospho-TAL1 (S122) Polyclonal Antibody detects endogenous levels of TAL1 protein only when phosphorylated at S122.
Immunogen Sequence	



Western blot analysis of lysates from Jurkat cells treated with PMA 125ng/ml 30', using TAL-1 (Phospho-Ser122) Antibody. The lane on the right is blocked with the phospho peptide.