

Anti-Phospho-COP1-Ser387 antibody (353-402 aa) (STJ90637)

STJ90637

GENERAL INFORMATION

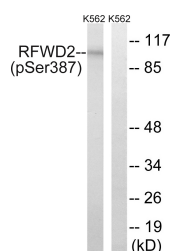
Product Type	Primary antibodies
Short Description	Rabbit polyclonal antibody anti-Phospho-E3 ubiquitin-protein ligase COP1-Ser387 (353-402 aa) is suitable for use in Western Blot and ELISA research applications.
Applications	WB/ELISA
Host/Source	Rabbit
Reactivity	Human/Mouse

PRODUCT PROPERTIES

Clonality	Polyclonal
Clone ID	
Concentration	1 mg/mL
Conjugation	Unconjugated
Purification	The antibody was affinity-purified from rabbit antiserum by affinity-chromatography using epitope-specific immunogen.
Dilution Range	WB 1:500-1:2000 ELISA 1:5000
Formulation	Liquid in PBS containing 50% Glycerol, 0.5% BSA and 0.02% Sodium Azide.
Isotype	IgG
Storage	Store at -20°C for up to 1 year from the date of receipt, and avoid repeat freeze-thaw cycles.
Instruction	

TARGET INFORMATION

Gene ID	64326
Gene Symbol	COP1
Uniprot ID	COP1_HUMAN
Immunogen	The antiserum was produced against synthesized peptide derived from the human RFWD2 around the phosphorylation site of Ser387 at the amino acid range 353-402
Immunogen Region	353-402 aa
Specificity	Phospho-COP1 (S387) Polyclonal Antibody detects endogenous levels of COP1 protein only when phosphorylated at S387.
Immunogen Sequence	



Western blot analysis of lysates from K562 cells treated with UV 15' using RFWD2 (Phospho-Ser387) Antibody. The lane on the right is blocked with the phospho peptide.