

## Anti-Phospho-PAK5/6-Ser602/S560 antibody (566-615 aa) (STJ90635)

STJ90635

### GENERAL INFORMATION

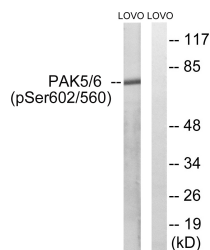
<b>Product Type</b>	Primary antibodies
<b>Short Description</b>	Rabbit polyclonal antibody anti-Phospho-Serine/threonine-protein kinase PAK 5 and Serine/threonine-protein kinase PAK 6-Ser602/S560 (566-615 aa) is suitable for use in Western Blot and ELISA research applications.
<b>Applications</b>	WB/ELISA
<b>Host/Source</b>	Rabbit
<b>Reactivity</b>	Human/Mouse

### PRODUCT PROPERTIES

<b>Clonality</b>	Polyclonal
<b>Clone ID</b>	
<b>Concentration</b>	1 mg/mL
<b>Conjugation</b>	Unconjugated
<b>Purification</b>	The antibody was affinity-purified from rabbit antiserum by affinity-chromatography using epitope-specific immunogen.
<b>Dilution</b>	WB 1:500-1:2000
<b>Range</b>	ELISA 1:20000
<b>Formulation</b>	Liquid in PBS containing 50% Glycerol, 0.5% BSA and 0.02% Sodium Azide.
<b>Isotype</b>	IgG
<b>Storage</b>	Store at -20°C for up to 1 year from the date of receipt, and avoid repeat freeze-thaw cycles.
<b>Instruction</b>	

### TARGET INFORMATION

<b>Gene ID</b>	<a href="#">106821730/56924</a>
	<a href="#">57144</a>
<b>Gene Symbol</b>	<a href="#">PAK6</a>
	<a href="#">PAK5</a>
<b>Uniprot ID</b>	<a href="#">PAK6_HUMAN</a>
	<a href="#">PAK5_HUMAN</a>
<b>Immunogen</b>	The antiserum was produced against synthesized peptide derived from the human PAK5/6 around the phosphorylation site of Ser602/Ser560 at the amino acid range 566-615
<b>Immunogen Region</b>	566-615 aa
<b>Specificity</b>	Phospho-PAK5/6 (S602/S560) Polyclonal Antibody detects endogenous levels of PAK5/6 protein only when phosphorylated at S602/S560.
<b>Immunogen Sequence</b>	



Western blot analysis of lysates from LOVO cells treated with PMA 125ng/ml 30', using PAK5/6 (Phospho-Ser602/Ser560) Antibody. The lane on the right is blocked with the phospho peptide.

This product is suitable for in-vitro studies under the RESEARCH USE ONLY [RUO] licence. This product must not be used as for diagnostic or other medical purposes.  
St John's Laboratory Ltd, Knowledge Dock Business Centre, University Way, London, E16 2RD | Tel: 0208 223 3081