

Anti-Phospho-KCNB1-Ser805 antibody (771-820 aa) (STJ90632)

STJ90632

GENERAL INFORMATION

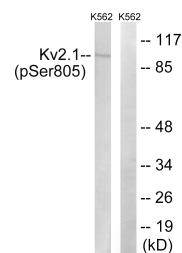
| | |
|--------------------------|---|
| Product Type | Primary antibodies |
| Short Description | Rabbit polyclonal antibody anti-Phospho-Potassium voltage-gated channel subfamily B member 1-Ser805 (771-820 aa) is suitable for use in Western Blot, ELISA and Immunohistochemistry research applications. |
| Applications | WB/ELISA/IHC |
| Host/Source | Rabbit |
| Reactivity | Human/Mouse/Rat |

PRODUCT PROPERTIES

| | |
|----------------------------|---|
| Clonality | Polyclonal |
| Clone ID | |
| Concentration | 1 mg/mL |
| Conjugation | Unconjugated |
| Purification | The antibody was affinity-purified from rabbit antiserum by affinity-chromatography using epitope-specific immunogen. |
| Dilution | WB 1:500-2000 |
| Range | IHC-P 1:50-300 ELISA 2000-20000 |
| Formulation | Liquid in PBS containing 50% Glycerol, 0.5% BSA and 0.02% Sodium Azide. |
| Isotype | IgG |
| Storage Instruction | Store at -20°C for up to 1 year from the date of receipt, and avoid repeat freeze-thaw cycles. |

TARGET INFORMATION

| | |
|---------------------------|---|
| Gene ID | 3745 |
| Gene Symbol | KCNB1 |
| Uniprot ID | KCNB1_HUMAN |
| Immunogen | The antiserum was produced against synthesized peptide derived from the human Kv2.1 around the phosphorylation site of Ser805 at the amino acid range 771-820 |
| Immunogen Region | 771-820 aa |
| Specificity | Phospho-KV2.1 (S805) Polyclonal Antibody detects endogenous levels of KV2.1 protein only when phosphorylated at S805. |
| Immunogen Sequence | |



Western blot analysis of lysates from K562 cells treated with TNF 200ng/ml 30', using Kv2.1 (Phospho-Ser805) Antibody. The lane on the right is blocked with the phospho peptide.