

Anti-Phospho-CCND2-Thr280 antibody (240-289 aa) (STJ90627)

STJ90627

GENERAL INFORMATION

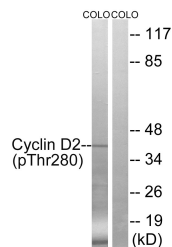
Product Type	Primary antibodies
Short Description	Rabbit polyclonal antibody anti-Phospho-G1/S-specific cyclin-D2-Thr280 (240-289 aa) is suitable for use in Western Blot, Immunohistochemistry, Immunofluorescence and ELISA research applications.
Applications	WB/IHC/IF/ELISA
Host/Source	Rabbit
Reactivity	Human/Mouse/Rat

PRODUCT PROPERTIES

Clonality	Polyclonal
Clone ID	
Concentration	1 mg/mL
Conjugation	Unconjugated
Purification	The antibody was affinity-purified from rabbit antiserum by affinity-chromatography using epitope-specific immunogen.
Dilution Range	WB 1:500-1:2000 IHC 1:100-1:300 ELISA 1:10000 IF 1:50-200
Formulation	Liquid in PBS containing 50% Glycerol, 0.5% BSA and 0.02% Sodium Azide.
Isotype	IgG
Storage Instruction	Store at -20°C for up to 1 year from the date of receipt, and avoid repeat freeze-thaw cycles.

TARGET INFORMATION

Gene ID	894
Gene Symbol	CCND2
Uniprot ID	CCND2_HUMAN
Immunogen	The antiserum was produced against synthesized peptide derived from the human Cyclin D2 around the phosphorylation site of Thr280 at the amino acid range 240-289
Immunogen Region	240-289 aa
Specificity	Phospho-Cyclin D2 (T280) Polyclonal Antibody detects endogenous levels of Cyclin D2 protein only when phosphorylated at T280.
Immunogen Sequence	



Western blot analysis of lysates from COLO205 cells treated with EGF 200ng/ml 30', using Cyclin D2 (Phospho-Thr280) Antibody. The lane on the right is blocked with the phospho peptide.