

Anti-Phospho-CLDN6-Tyr219 antibody (171-220 aa) (STJ90625)

STJ90625

GENERAL INFORMATION

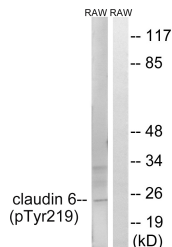
Product Type	Primary antibodies
Short Description	Rabbit polyclonal antibody anti-Phospho-Claudin-6-Tyr219 (171-220 aa) is suitable for use in Western Blot, Immunohistochemistry, Immunofluorescence and ELISA research applications.
Applications	WB/IHC/IF/ELISA
Host/Source	Rabbit
Reactivity	Human/Mouse

PRODUCT PROPERTIES

Clonality	Polyclonal
Clone ID	
Concentration	1 mg/mL
Conjugation	Unconjugated
Purification	The antibody was affinity-purified from rabbit antiserum by affinity-chromatography using epitope-specific immunogen.
Dilution Range	WB 1:500-1:2000 IHC 1:100-1:300 ELISA 1:5000 IF 1:50-200
Formulation	Liquid in PBS containing 50% Glycerol, 0.5% BSA and 0.02% Sodium Azide.
Isotype	IgG
Storage Instruction	Store at -20°C for up to 1 year from the date of receipt, and avoid repeat freeze-thaw cycles.

TARGET INFORMATION

Gene ID	9074
Gene Symbol	CLDN6
Uniprot ID	CLD6_HUMAN
Immunogen	The antiserum was produced against synthesized peptide derived from the human Claudin 6 around the phosphorylation site of Tyr219 at the amino acid range 171-220
Immunogen Region	171-220 aa
Specificity	Phospho-Claudin-6 (Y219) Polyclonal Antibody detects endogenous levels of Claudin-6 protein only when phosphorylated at Y219.
Immunogen Sequence	



Western blot analysis of lysates from RAW264.7 cells treated with UV 5', using Claudin 6 (Phospho-Tyr219) Antibody. The lane on the right is blocked with the phospho peptide.

This product is suitable for in-vitro studies under the RESEARCH USE ONLY [RUO] licence. This product must not be used as for diagnostic or other medical purposes.
St John's Laboratory Ltd, Knowledge Dock Business Centre, University Way, London, E16 2RD | Tel: 0208 223 3081