

## Anti-Phospho-CEBPA-Thr230 antibody (STJ90623)

STJ90623

### GENERAL INFORMATION

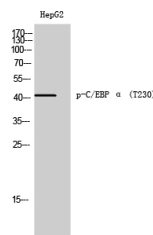
<b>Product Type</b>	Primary antibodies
<b>Short Description</b>	Rabbit polyclonal antibody anti-Phospho-CCAAT/enhancer-binding protein alpha-Thr230 is suitable for use in Western Blot and ELISA research applications.
<b>Applications</b>	WB/ELISA
<b>Host/Source</b>	Rabbit
<b>Reactivity</b>	Human/Mouse/Rat

### PRODUCT PROPERTIES

<b>Clonality</b>	Polyclonal
<b>Clone ID</b>	
<b>Concentration</b>	1 mg/mL
<b>Conjugation</b>	Unconjugated
<b>Purification</b>	The antibody was affinity-purified from rabbit antiserum by affinity-chromatography using epitope-specific immunogen.
<b>Dilution Range</b>	WB 1:500-1:2000 ELISA 1:10000
<b>Formulation</b>	Liquid in PBS containing 50% Glycerol, 0.5% BSA and 0.02% Sodium Azide.
<b>Isotype</b>	IgG
<b>Storage</b>	Store at -20°C for up to 1 year from the date of receipt, and avoid repeat freeze-thaw cycles.
<b>Instruction</b>	

### TARGET INFORMATION

<b>Gene ID</b>	1050
<b>Gene Symbol</b>	CEBPA
<b>Uniprot ID</b>	CEBPA_HUMAN
<b>Immunogen</b>	Synthesized phospho-peptide around the phosphorylation site of human C/EBP Alpha (phospho Thr230)
<b>Immunogen Region</b>	
<b>Specificity</b>	Phospho-C/EBP Alpha (T230) Polyclonal Antibody detects endogenous levels of C/EBP Alpha protein only when phosphorylated at T230.
<b>Immunogen Sequence</b>	



Western blot analysis of HepG2 cells using Phospho-C/EBP Alpha (T230) Polyclonal Antibody cells nucleus extracted by Minute™ Cytoplasmic and Nuclear Fractionation kit (SC-003, InventiBiotec, MN, USA).