

Anti-Phospho-RUNX1-Ser435 antibody (401-450 aa) (STJ90619)

STJ90619

GENERAL INFORMATION

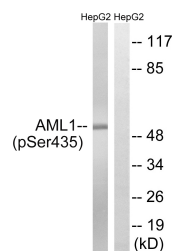
Product Type	Primary antibodies
Short Description	Rabbit polyclonal antibody anti-Phospho-Runt-related transcription factor 1-Ser435 (401-450 aa) is suitable for use in Western Blot and ELISA research applications.
Applications	WB/ELISA
Host/Source	Rabbit
Reactivity	Human/Mouse/Rat

PRODUCT PROPERTIES

Clonality	Polyclonal
Clone ID	
Concentration	1 mg/mL
Conjugation	Unconjugated
Purification	The antibody was affinity-purified from rabbit antiserum by affinity-chromatography using epitope-specific immunogen.
Dilution Range	WB 1:500-1:2000 ELISA 1:10000
Formulation	Liquid in PBS containing 50% Glycerol, 0.5% BSA and 0.02% Sodium Azide.
Isotype	IgG
Storage	Store at -20°C for up to 1 year from the date of receipt, and avoid repeat freeze-thaw cycles.
Instruction	

TARGET INFORMATION

Gene ID	861
Gene Symbol	RUNX1
Uniprot ID	RUNX1_HUMAN
Immunogen	The antiserum was produced against synthesized peptide derived from the human AML1 around the phosphorylation site of Ser435 at the amino acid range 401-450
Immunogen Region	401-450 aa
Specificity	Phospho-RUNX1 (S435) Polyclonal Antibody detects endogenous levels of RUNX1 protein only when phosphorylated at S435.
Immunogen Sequence	



Western blot analysis of lysates from HepG2 cells treated with PMA 125ng/ml 30', using AML1 (Phospho-Ser435) Antibody. The lane on the right is blocked with the phospho peptide.