

Anti-Phospho-GRK2-Ser685 antibody (640-689 aa) (STJ90616)

STJ90616

GENERAL INFORMATION

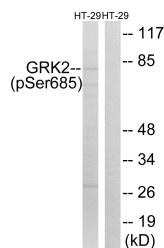
Product Type	Primary antibodies
Short Description	Rabbit polyclonal antibody anti-Phospho-Beta-adrenergic receptor kinase 1-Ser685 (640-689 aa) is suitable for use in Western Blot and ELISA research applications.
Applications	WB/ELISA
Host/Source	Rabbit
Reactivity	Human/Mouse/Rat

PRODUCT PROPERTIES

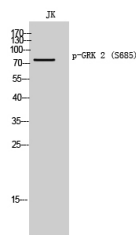
Clonality	Polyclonal
Clone ID	
Concentration	1 mg/mL
Conjugation	Unconjugated
Purification	The antibody was affinity-purified from rabbit antiserum by affinity-chromatography using epitope-specific immunogen.
Dilution Range	WB 1:500-1:2000 ELISA 1:5000
Formulation	Liquid in PBS containing 50% Glycerol, 0.5% BSA and 0.02% Sodium Azide.
Isotype	IgG
Storage	Store at -20°C for up to 1 year from the date of receipt, and avoid repeat freeze-thaw cycles.
Instruction	

TARGET INFORMATION

Gene ID	156
Gene Symbol	GRK2
Uniprot ID	ARBK1_HUMAN
Immunogen	The antiserum was produced against synthesized peptide derived from the human GRK2 around the phosphorylation site of Ser685 at the amino acid range 640-689
Immunogen Region	640-689 aa
Specificity	Phospho-GRK 2 (S685) Polyclonal Antibody detects endogenous levels of GRK 2 protein only when phosphorylated at S685.
Immunogen Sequence	



Western blot analysis of lysates from HT29 cells treated with insulin 0.01U/ml 15', using GRK2 (Phospho-Ser685) Antibody. The lane on the right is blocked with the phospho peptide.



Western blot analysis of JK cells using Phospho-GRK 2 (S685) Polyclonal Antibody diluted at 10% 500