

Anti-Phospho-SRC-Tyr216 antibody (181-230 aa) (STJ90611)

STJ90611

GENERAL INFORMATION

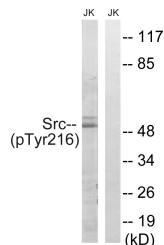
| | |
|--------------------------|---|
| Product Type | Primary antibodies |
| Short Description | Rabbit polyclonal antibody anti-Phospho-Proto-oncogene tyrosine-protein kinase Src-Tyr216 (181-230 aa) is suitable for use in Western Blot, Immunohistochemistry, Immunofluorescence and ELISA research applications. |
| Applications | WB/IHC/IF/ELISA |
| Host/Source | Rabbit |
| Reactivity | Human/Mouse/Rat |

PRODUCT PROPERTIES

| | |
|----------------------------|---|
| Clonality | Polyclonal |
| Clone ID | |
| Concentration | 1 mg/mL |
| Conjugation | Unconjugated |
| Purification | The antibody was affinity-purified from rabbit antiserum by affinity-chromatography using epitope-specific immunogen. |
| Dilution | WB 1:500-1:2000 |
| Range | IHC 1:100-1:300 ELISA 1:10000 IF 1:50-200 |
| Formulation | Liquid in PBS containing 50% Glycerol, 0.5% BSA and 0.02% Sodium Azide. |
| Isotype | IgG |
| Storage Instruction | Store at -20°C for up to 1 year from the date of receipt, and avoid repeat freeze-thaw cycles. |

TARGET INFORMATION

| | |
|---------------------------|---|
| Gene ID | 6714 |
| Gene Symbol | SRC |
| Uniprot ID | SRC_HUMAN |
| Immunogen | The antiserum was produced against synthesized peptide derived from the human Src around the phosphorylation site of Tyr216 at the amino acid range 181-230 |
| Immunogen Region | 181-230 aa |
| Specificity | Phospho-c-Src (Y216) Polyclonal Antibody detects endogenous levels of c-Src protein only when phosphorylated at Y216. |
| Immunogen Sequence | |



Western blot analysis of lysates from Jurkat cells treated with EGF 200ng/ml 5', using Src (Phospho-Tyr216) Antibody. The lane on the right is blocked with the phospho peptide.