

Anti-Phospho-CBX3-Ser93 antibody (59-108 aa) (STJ90610)

STJ90610

GENERAL INFORMATION

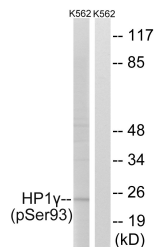
Product Type	Primary antibodies
Short Description	Rabbit polyclonal antibody anti-Phospho-Chromobox protein homolog 3-Ser93 (59-108 aa) is suitable for use in Western Blot, Immunohistochemistry, Immunofluorescence and ELISA research applications.
Applications	WB/IHC/IF/ELISA
Host/Source	Rabbit
Reactivity	Human/Mouse/Rat

PRODUCT PROPERTIES

Clonality	Polyclonal
Clone ID	
Concentration	1 mg/mL
Conjugation	Unconjugated
Purification	The antibody was affinity-purified from rabbit antiserum by affinity-chromatography using epitope-specific immunogen.
Dilution Range	WB 1:500-1:2000 IHC 1:100-1:300 ELISA 1:10000 IF 1:50-200
Formulation	Liquid in PBS containing 50% Glycerol, 0.5% BSA and 0.02% Sodium Azide.
Isotype	IgG
Storage Instruction	Store at -20°C for up to 1 year from the date of receipt, and avoid repeat freeze-thaw cycles.

TARGET INFORMATION

Gene ID	11335
Gene Symbol	CBX3
Uniprot ID	CBX3_HUMAN
Immunogen	The antiserum was produced against synthesized peptide derived from the human HP1 gamma around the phosphorylation site of Ser93 at the amino acid range 59-108
Immunogen Region	59-108 aa
Specificity	Phospho-HP1 Gamma (S93) Polyclonal Antibody detects endogenous levels of HP1 Gamma protein only when phosphorylated at S93.
Immunogen Sequence	



Western blot analysis of lysates from K562 cells treated with forskolin 40nM 30', using HP1 gamma (Phospho-Ser93) Antibody. The lane on the right is blocked with the phospho peptide.