

Anti-Phospho-IRS1-Tyr896 antibody (862-911 aa) (STJ90605)

STJ90605

GENERAL INFORMATION

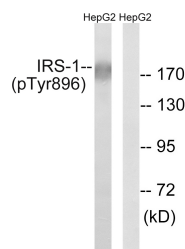
Product Type	Primary antibodies
Short Description	Rabbit polyclonal antibody anti-Phospho-Insulin receptor substrate 1-Tyr896 (862-911 aa) is suitable for use in Western Blot and Immunohistochemistry research applications.
Applications	WB/IHC
Host/Source	Rabbit
Reactivity	Human/Mouse/Rat

PRODUCT PROPERTIES

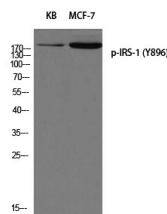
Clonality	Polyclonal
Clone ID	
Concentration	1 mg/mL
Conjugation	Unconjugated
Purification	The antibody was affinity-purified from rabbit antiserum by affinity-chromatography using epitope-specific immunogen.
Dilution Range	WB 1:500-2000 IHC-P 1:50-300
Formulation	Liquid in PBS containing 50% Glycerol, 0.5% BSA and 0.02% Sodium Azide.
Isotype	IgG
Storage	Store at -20°C for up to 1 year from the date of receipt, and avoid repeat freeze-thaw cycles.
Instruction	

TARGET INFORMATION

Gene ID	3667
Gene Symbol	IRS1
Uniprot ID	IRS1_HUMAN
Immunogen	The antiserum was produced against synthesized peptide derived from the human IRS-1 around the phosphorylation site of Tyr896 at the amino acid range 862-911
Immunogen Region	862-911 aa
Specificity	Phospho-IRS-1 (Y896) Polyclonal Antibody detects endogenous levels of IRS-1 protein only when phosphorylated at Y896.
Immunogen Sequence	



Western blot analysis of lysates from HepG2 cells treated with Na_2VO_4 0.3mM 40', using IRS-1 (Phospho-Tyr896) Antibody. The lane on the right is blocked with the phospho peptide.



Western blot analysis of KB MCF-7 using p-IRS-1 (Y896) antibody. Antibody was diluted at 1:500