

Anti-Phospho-LCK-Ser540 antibody (26-75 aa) (STJ90603)

STJ90603

GENERAL INFORMATION

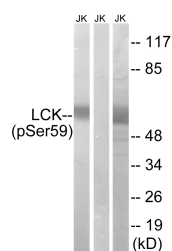
Product Type	Primary antibodies
Short Description	Rabbit polyclonal antibody anti-Phospho-Tyrosine-protein kinase Lck-Ser540 (26-75 aa) is suitable for use in Western Blot and ELISA research applications.
Applications	WB/ELISA
Host/Source	Rabbit
Reactivity	Human/Mouse/Rat

PRODUCT PROPERTIES

Clonality	Polyclonal
Clone ID	
Concentration	1 mg/mL
Conjugation	Unconjugated
Purification	The antibody was affinity-purified from rabbit antiserum by affinity-chromatography using epitope-specific immunogen.
Dilution Range	WB 1:500-1:2000 ELISA 1:40000
Formulation	Liquid in PBS containing 50% Glycerol, 0.5% BSA and 0.02% Sodium Azide.
Isotype	IgG
Storage	Store at -20°C for up to 1 year from the date of receipt, and avoid repeat freeze-thaw cycles.
Instruction	

TARGET INFORMATION

Gene ID	3932
Gene Symbol	LCK
Uniprot ID	LCK_HUMAN
Immunogen	The antiserum was produced against synthesized peptide derived from the human LCK around the phosphorylation site of Ser59 at the amino acid range 26-75
Immunogen Region	26-75 aa
Specificity	Phospho-Lck (S540) Polyclonal Antibody detects endogenous levels of Lck protein only when phosphorylated at S540.
Immunogen Sequence	



Western blot analysis of lysates from Jurkat cells treated with IFN 2500U/mL 30', using LCK (Phospho-Ser59) Antibody. The lane on the right is blocked with the phospho peptide.