

Anti-Phospho-PDGFRα-Tyr849 antibody (816-865 aa) (STJ90601)

STJ90601

GENERAL INFORMATION

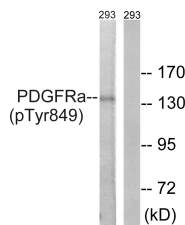
Product Type	Primary antibodies
Short Description	Rabbit polyclonal antibody anti-Phospho-Platelet-derived growth factor receptor alpha-Tyr849 (816-865 aa) is suitable for use in Western Blot, Immunohistochemistry, Immunofluorescence and ELISA research applications.
Applications	WB/IHC/IF/ELISA
Host/Source	Rabbit
Reactivity	Human/Mouse/Rat

PRODUCT PROPERTIES

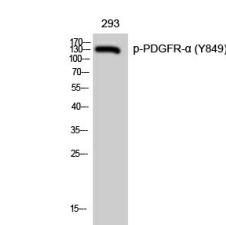
Clonality	Polyclonal
Clone ID	
Concentration	1 mg/mL
Conjugation	Unconjugated
Purification	The antibody was affinity-purified from rabbit antiserum by affinity-chromatography using epitope-specific immunogen.
Dilution Range	WB 1:500-1:2000 IHC 1:100-1:300 ELISA 1:5000 IF 1:50-200
Formulation	Liquid in PBS containing 50% Glycerol, 0.5% BSA and 0.02% Sodium Azide.
Isotype	IgG
Storage Instruction	Store at -20°C for up to 1 year from the date of receipt, and avoid repeat freeze-thaw cycles.

TARGET INFORMATION

Gene ID	5156
Gene Symbol	PDGFRA
Uniprot ID	PGFRA_HUMAN
Immunogen	The antiserum was produced against synthesized peptide derived from the human PDGFRα around the phosphorylation site of Tyr849 at the amino acid range 816-865
Immunogen Region	816-865 aa
Specificity	Phospho-PDGFR-Alpha (Y849) Polyclonal Antibody detects endogenous levels of PDGFR-Alpha protein only when phosphorylated at Y849.
Immunogen Sequence	



Western blot analysis of lysates from 293 cells, using PDGFRα (Phospho-Tyr849) Antibody. The lane on the right is blocked with the phospho peptide.



Western blot analysis of 293 cells using Phospho-PDGFR-Alpha (Y849) Polyclonal Antibody

This product is suitable for in-vitro studies under the RESEARCH USE ONLY [RUO] licence. This product must not be used as for diagnostic or other medical purposes.
St John's Laboratory Ltd, Knowledge Dock Business Centre, University Way, London, E16 2RD | Tel: 0208 223 3081