

Anti-Phospho-IRF3-Ser386 antibody (352-401 aa) (STJ90598)

STJ90598

GENERAL INFORMATION

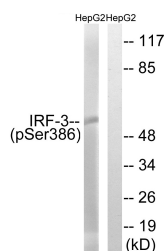
Product Type	Primary antibodies
Short Description	Rabbit polyclonal antibody anti-Phospho-Interferon regulatory factor 3-Ser386 (352-401 aa) is suitable for use in Western Blot and Immunohistochemistry research applications.
Applications	WB/IHC
Host/Source	Rabbit
Reactivity	Human/Rat/Mouse

PRODUCT PROPERTIES

Clonality	Polyclonal
Clone ID	
Concentration	1 mg/mL
Conjugation	Unconjugated
Purification	The antibody was affinity-purified from rabbit antiserum by affinity-chromatography using epitope-specific immunogen.
Dilution Range	WB 1:500-2000 IHC-P 1:50-300
Formulation	Liquid in PBS containing 50% Glycerol, 0.5% BSA and 0.02% Sodium Azide.
Isotype	IgG
Storage	Store at -20°C for up to 1 year from the date of receipt, and avoid repeat freeze-thaw cycles.
Instruction	

TARGET INFORMATION

Gene ID	3661
Gene Symbol	IRF3
Uniprot ID	IRF3_HUMAN
Immunogen	The antiserum was produced against synthesized peptide derived from the human IRF-3 around the phosphorylation site of Ser386 at the amino acid range 352-401
Immunogen Region	352-401 aa
Specificity	Phospho-IRF-3 (S386) Polyclonal Antibody detects endogenous levels of IRF-3 protein only when phosphorylated at S386.
Immunogen Sequence	



Western blot analysis of lysates from HepG2 cells treated with EGF 200ng/ml 30', using IRF-3 (Phospho-Ser386) Antibody. The lane on the right is blocked with the phospho peptide.