

Anti-Phospho-PRKCD-Tyr64 antibody (30-79 aa) (STJ90593)

STJ90593

GENERAL INFORMATION

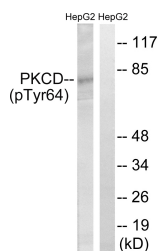
Product Type	Primary antibodies
Short Description	Rabbit polyclonal antibody anti-Phospho-Protein kinase C delta type-Tyr64 (30-79 aa) is suitable for use in Western Blot and Immunohistochemistry research applications.
Applications	WB/IHC
Host/Source	Rabbit
Reactivity	Human/Mouse/Rat

PRODUCT PROPERTIES

Clonality	Polyclonal
Clone ID	
Concentration	1 mg/mL
Conjugation	Unconjugated
Purification	The antibody was affinity-purified from rabbit antiserum by affinity-chromatography using epitope-specific immunogen.
Dilution Range	WB 1:500-2000 IHC-P 1:50-300
Formulation	Liquid in PBS containing 50% Glycerol, 0.5% BSA and 0.02% Sodium Azide.
Isotype	IgG
Storage	Store at -20°C for up to 1 year from the date of receipt, and avoid repeat freeze-thaw cycles.
Instruction	

TARGET INFORMATION

Gene ID	5580
Gene Symbol	PRKCD
Uniprot ID	KPCD_HUMAN
Immunogen	The antiserum was produced against synthesized peptide derived from the human PKCD around the phosphorylation site of Tyr64 at the amino acid range 30-79
Immunogen Region	30-79 aa
Specificity	Phospho-PKC Delta (Y64) Polyclonal Antibody detects endogenous levels of PKC Delta protein only when phosphorylated at Y64.
Immunogen Sequence	



Western blot analysis of lysates from HepG2 cells treated with PMA 125ng/ml 30', using PKCD (Phospho-Tyr64) Antibody. The lane on the right is blocked with the phospho peptide.