

Anti-Phospho-NTRK1-Tyr680/Y681 antibody (646-695 aa) (STJ90578)

STJ90578

GENERAL INFORMATION

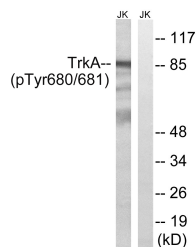
Product Type	Primary antibodies
Short Description	Rabbit polyclonal antibody anti-Phospho-High affinity nerve growth factor receptor-Tyr680/Y681 (646-695 aa) is suitable for use in Western Blot and ELISA research applications.
Applications	WB/ELISA
Host/Source	Rabbit
Reactivity	Human/Mouse/Rat

PRODUCT PROPERTIES

Clonality	Polyclonal
Clone ID	
Concentration	1 mg/mL
Conjugation	Unconjugated
Purification	The antibody was affinity-purified from rabbit antiserum by affinity-chromatography using epitope-specific immunogen.
Dilution Range	WB 1:500-1:2000 ELISA 1:5000
Formulation	Liquid in PBS containing 50% Glycerol, 0.5% BSA and 0.02% Sodium Azide.
Isotype	IgG
Storage	Store at -20°C for up to 1 year from the date of receipt, and avoid repeat freeze-thaw cycles.
Instruction	

TARGET INFORMATION

Gene ID	4914
Gene Symbol	NTRK1
Uniprot ID	NTRK1_HUMAN
Immunogen	The antiserum was produced against synthesized peptide derived from the human Trk A around the phosphorylation site of Tyr680 and Tyr681 at the amino acid range 646-695
Immunogen Region	646-695 aa
Specificity	Phospho-Trk A (Y680/Y681) Polyclonal Antibody detects endogenous levels of Trk A protein only when phosphorylated at Y680/Y681.
Immunogen Sequence	



Western blot analysis of lysates from Jurkat cells treated with starved 24h, using Trk A (Phospho-Tyr680+Tyr681) Antibody. The lane on the right is blocked with the phospho peptide.