

## Anti-Phospho-PTPN6-Tyr564 antibody (530-579 aa) (STJ90575)

STJ90575

### GENERAL INFORMATION

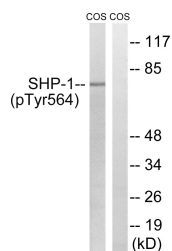
<b>Product Type</b>	Primary antibodies
<b>Short Description</b>	Rabbit polyclonal antibody anti-Phospho-Tyrosine-protein phosphatase non-receptor type 6-Tyr564 (530-579 aa) is suitable for use in Western Blot, ELISA and Immunohistochemistry research applications.
<b>Applications</b>	WB/ELISA/IHC
<b>Host/Source</b>	Rabbit
<b>Reactivity</b>	Human/Monkey

### PRODUCT PROPERTIES

<b>Clonality</b>	Polyclonal
<b>Clone ID</b>	
<b>Concentration</b>	1 mg/mL
<b>Conjugation</b>	Unconjugated
<b>Purification</b>	The antibody was affinity-purified from rabbit antiserum by affinity-chromatography using epitope-specific immunogen.
<b>Dilution</b>	WB 1:500-2000
<b>Range</b>	IHC-P 1:50-300 ELISA 2000-20000
<b>Formulation</b>	Liquid in PBS containing 50% Glycerol, 0.5% BSA and 0.02% Sodium Azide.
<b>Isotype</b>	IgG
<b>Storage Instruction</b>	Store at -20°C for up to 1 year from the date of receipt, and avoid repeat freeze-thaw cycles.

### TARGET INFORMATION

<b>Gene ID</b>	5777
<b>Gene Symbol</b>	PTPN6
<b>Uniprot ID</b>	PTN6_HUMAN
<b>Immunogen</b>	The antiserum was produced against synthesized peptide derived from the human SHP-1 around the phosphorylation site of Tyr564 at the amino acid range 530-579
<b>Immunogen Region</b>	530-579 aa
<b>Specificity</b>	Phospho-SH-PTP1 (Y564) Polyclonal Antibody detects endogenous levels of SH-PTP1 protein only when phosphorylated at Y564.
<b>Immunogen Sequence</b>	



Western blot analysis of lysates from COS7 cells treated with EGF 200ng/ml 30', using SHP-1 (Phospho-Tyr564) Antibody. The lane on the right is blocked with the phospho peptide.