

Anti-Phospho-NR3C1-Ser203 antibody (171-220 aa) (STJ90572)

STJ90572

GENERAL INFORMATION

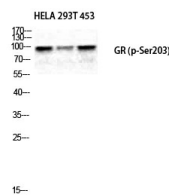
Product Type	Primary antibodies
Short Description	Rabbit polyclonal antibody anti-Phospho-Glucocorticoid receptor-Ser203 (171-220 aa) is suitable for use in Western Blot and ELISA research applications.
Applications	WB/ELISA
Host/Source	Rabbit
Reactivity	Human/Mouse

PRODUCT PROPERTIES

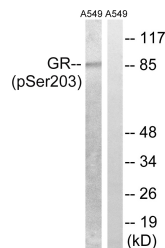
Clonality	Polyclonal
Clone ID	
Concentration	1 mg/mL
Conjugation	Unconjugated
Purification	The antibody was affinity-purified from rabbit antiserum by affinity-chromatography using epitope-specific immunogen.
Dilution Range	WB 1:500-1:2000 ELISA 1:10000
Formulation	Liquid in PBS containing 50% Glycerol, 0.5% BSA and 0.02% Sodium Azide.
Isotype	IgG
Storage	Store at -20°C for up to 1 year from the date of receipt, and avoid repeat freeze-thaw cycles.
Instruction	

TARGET INFORMATION

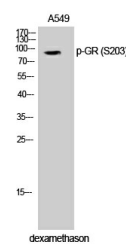
Gene ID	2908
Gene Symbol	NR3C1
Uniprot ID	GCR_HUMAN
Immunogen	The antiserum was produced against synthesized peptide derived from the human GR around the phosphorylation site of Ser203 at the amino acid range 171-220
Immunogen Region	171-220 aa
Specificity	Phospho-GR (S203) Polyclonal Antibody detects endogenous levels of GR protein only when phosphorylated at S203.
Immunogen Sequence	



Western blot analysis of HELA 293T 453 cells using Phospho-GR (S203) Polyclonal Antibody diluted at 1:1000



Western blot analysis of lysates from A549 cells treated with dexamethasone 10nM 1h, using GR (Phospho-Ser203) Antibody. The lane on the right is blocked with the phospho peptide.



Western blot analysis of A549 cells using Phospho-GR (S203) Polyclonal Antibody diluted at 1:1000