

Anti-Phospho-EZR-Tyr478 antibody (446-495 aa) (STJ90570)

STJ90570

GENERAL INFORMATION

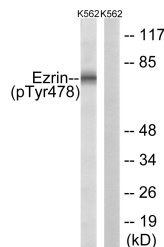
Product Type	Primary antibodies
Short Description	Rabbit polyclonal antibody anti-Phospho-Ezrin-Tyr478 (446-495 aa) is suitable for use in Western Blot, Immunohistochemistry, Immunofluorescence and ELISA research applications.
Applications	WB/IHC/IF/ELISA
Host/Source	Rabbit
Reactivity	Human/Mouse/Rat

PRODUCT PROPERTIES

Clonality	Polyclonal
Clone ID	
Concentration	1 mg/mL
Conjugation	Unconjugated
Purification	The antibody was affinity-purified from rabbit antiserum by affinity-chromatography using epitope-specific immunogen.
Dilution Range	WB 1:500-1:2000 IHC 1:100-1:300 ELISA 1:5000 IF 1:50-200
Formulation	Liquid in PBS containing 50% Glycerol, 0.5% BSA and 0.02% Sodium Azide.
Isotype	IgG
Storage Instruction	Store at -20°C for up to 1 year from the date of receipt, and avoid repeat freeze-thaw cycles.

TARGET INFORMATION

Gene ID	7430
Gene Symbol	EZR
Uniprot ID	EZRI_HUMAN
Immunogen	The antiserum was produced against synthesized peptide derived from the human Ezrin around the phosphorylation site of Tyr478 at the amino acid range 446-495
Immunogen Region	446-495 aa
Specificity	Phospho-Ezrin (Y478) Polyclonal Antibody detects endogenous levels of Ezrin protein only when phosphorylated at Y478.
Immunogen Sequence	



Western blot analysis of Ezrin (Phospho-Tyr478) Antibody. The lane on the right is blocked with the Ezrin (Phospho-Tyr478) peptide.