

Anti-Phospho-CASP8-Tyr380 antibody (346-395 aa) (STJ90563)

STJ90563

GENERAL INFORMATION

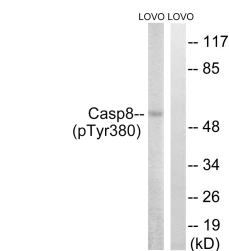
Product Type	Primary antibodies
Short Description	Rabbit polyclonal antibody anti-Phospho-Caspase-8-Tyr380 (346-395 aa) is suitable for use in Western Blot and ELISA research applications.
Applications	WB/ELISA
Host/Source	Rabbit
Reactivity	Human/Rat/Mouse

PRODUCT PROPERTIES

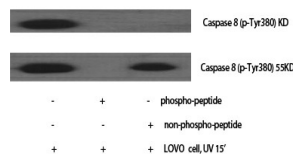
Clonality	Polyclonal
Clone ID	
Concentration	1 mg/mL
Conjugation	Unconjugated
Purification	The antibody was affinity-purified from rabbit antiserum by affinity-chromatography using epitope-specific immunogen.
Dilution Range	WB 1:500-1:2000 ELISA 1:10000
Formulation	Liquid in PBS containing 50% Glycerol, 0.5% BSA and 0.02% Sodium Azide.
Isotype	IgG
Storage	Store at -20°C for up to 1 year from the date of receipt, and avoid repeat freeze-thaw cycles.
Instruction	

TARGET INFORMATION

Gene ID	841
Gene Symbol	CASP8
Uniprot ID	CASP8_HUMAN
Immunogen	The antiserum was produced against synthesized peptide derived from the human Caspase 8 around the phosphorylation site of Tyr380 at the amino acid range 346-395
Immunogen Region	346-395 aa
Specificity	Phospho-Caspase-8 (Y380) Polyclonal Antibody detects endogenous levels of Caspase-8 protein only when phosphorylated at Y380.
Immunogen Sequence	



Western blot analysis of lysates from LOVO cells treated with UV 15', using Caspase 8 (Phospho-Tyr380) Antibody. The lane on the right is blocked with the phospho peptide.



Western blot analysis of various cells using Phospho-Caspase-8 (Y380) Polyclonal Antibody

This product is suitable for in-vitro studies under the RESEARCH USE ONLY [RUO] licence. This product must not be used as for diagnostic or other medical purposes.
St John's Laboratory Ltd, Knowledge Dock Business Centre, University Way, London, E16 2RD | Tel: 0208 223 3081