

Anti-Phospho-14-3-3 Beta/Zeta-Ser184/186 antibody (151-200 aa) (STJ90562)

STJ90562

GENERAL INFORMATION

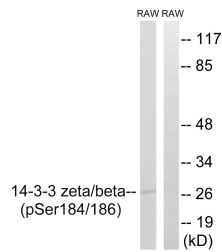
Product Type	Primary antibodies
Short Description	Rabbit polyclonal antibody anti-Phospho-14-3-3 protein zeta/delta and 14-3-3 protein beta/alpha-Ser184/186 (151-200 aa) is suitable for use in Western Blot and ELISA research applications.
Applications	WB/ELISA
Host/Source	Rabbit
Reactivity	Human/Mouse/Rat

PRODUCT PROPERTIES

Clonality	Polyclonal
Clone ID	
Concentration	1 mg/mL
Conjugation	Unconjugated
Purification	The antibody was affinity-purified from rabbit antiserum by affinity-chromatography using epitope-specific immunogen.
Dilution Range	WB 1:500-1:2000 ELISA 1:5000
Formulation	Liquid in PBS containing 50% Glycerol, 0.5% BSA and 0.02% Sodium Azide.
Isotype	IgG
Storage	Store at -20°C for up to 1 year from the date of receipt, and avoid repeat freeze-thaw cycles.
Instruction	

TARGET INFORMATION

Gene ID	7534 7529
Gene Symbol	YWHAZ YWHAB
Uniprot ID	1433Z_HUMAN 1433B_HUMAN
Immunogen	The antiserum was produced against synthesized peptide derived from the human 14-3-3 beta/zeta around the phosphorylation site of Ser184/186 at the amino acid range 151-200
Immunogen Region	151-200 aa
Specificity	Phospho-14-3-3 Beta/Zeta (S184/186) Polyclonal Antibody detects endogenous levels of 14-3-3 Beta/Zeta protein only when phosphorylated at S184/186.
Immunogen Sequence	



Western blot analysis of lysates from RAW264.7 cells treated with UV 15', using 14-3-3 beta/zeta (Phospho-Ser184/186) Antibody. The lane on the right is blocked with the phospho peptide.

This product is suitable for in-vitro studies under the RESEARCH USE ONLY [RUO] licence. This product must not be used as for diagnostic or other medical purposes.
St John's Laboratory Ltd, Knowledge Dock Business Centre, University Way, London, E16 2RD | Tel: 0208 223 3081