

Anti-Phospho-MRE11-Ser264 antibody (230-279 aa) (STJ90554)

STJ90554

GENERAL INFORMATION

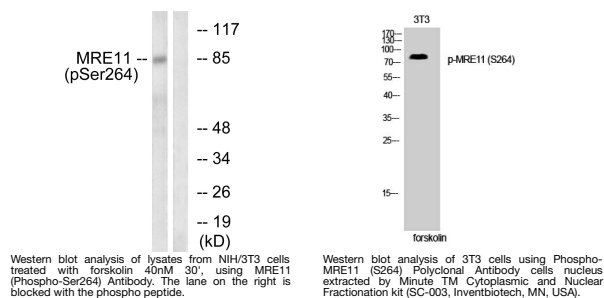
Product Type	Primary antibodies
Short Description	Rabbit polyclonal antibody anti-Phospho-Double-strand break repair protein MRE11-Ser264 (230-279 aa) is suitable for use in Western Blot, ELISA and Immunohistochemistry research applications.
Applications	WB/ELISA/IHC
Host/Source	Rabbit
Reactivity	Human/Mouse/Rat

PRODUCT PROPERTIES

Clonality	Polyclonal
Clone ID	
Concentration	1 mg/mL
Conjugation	Unconjugated
Purification	The antibody was affinity-purified from rabbit antiserum by affinity-chromatography using epitope-specific immunogen.
Dilution	WB 1:500-2000
Range	IHC-P 1:50-300 ELISA 2000-20000
Formulation	Liquid in PBS containing 50% Glycerol, 0.5% BSA and 0.02% Sodium Azide.
Isotype	IgG
Storage Instruction	Store at -20°C for up to 1 year from the date of receipt, and avoid repeat freeze-thaw cycles.

TARGET INFORMATION

Gene ID	4361
Gene Symbol	MRE11
Uniprot ID	MRE11_HUMAN
Immunogen	The antiserum was produced against synthesized peptide derived from the human MRE11 around the phosphorylation site of Ser264 at the amino acid range 230-279
Immunogen Region	230-279 aa
Specificity	Phospho-MRE11 (S264) Polyclonal Antibody detects endogenous levels of MRE11 protein only when phosphorylated at S264.
Immunogen Sequence	



This product is suitable for in-vitro studies under the RESEARCH USE ONLY [RUO] licence. This product must not be used as for diagnostic or other medical purposes.
St John's Laboratory Ltd, Knowledge Dock Business Centre, University Way, London, E16 2RD | Tel: 0208 223 3081