

Anti-Phospho-CSNK1A1-Thr321 antibody (287-336 aa) (STJ90552)

STJ90552

GENERAL INFORMATION

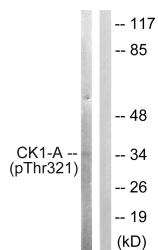
Product Type	Primary antibodies
Short Description	Rabbit polyclonal antibody anti-Phospho-Casein kinase I isoform alpha-Thr321 (287-336 aa) is suitable for use in Western Blot, Immunohistochemistry, Immunofluorescence and ELISA research applications.
Applications	WB/IHC/IF/ELISA
Host/Source	Rabbit
Reactivity	Human/Mouse/Rat

PRODUCT PROPERTIES

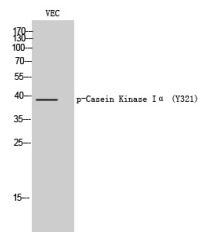
Clonality	Polyclonal
Clone ID	
Concentration	1 mg/mL
Conjugation	Unconjugated
Purification	The antibody was affinity-purified from rabbit antiserum by affinity-chromatography using epitope-specific immunogen.
Dilution	WB 1:500-1:2000
Range	IHC 1:100-1:300 ELISA 1:5000 IF 1:50-200
Formulation	Liquid in PBS containing 50% Glycerol, 0.5% BSA and 0.02% Sodium Azide.
Isotype	IgG
Storage Instruction	Store at -20°C for up to 1 year from the date of receipt, and avoid repeat freeze-thaw cycles.

TARGET INFORMATION

Gene ID	1452
Gene Symbol	CSNK1A1
Uniprot ID	KC1A_HUMAN
Immunogen	The antiserum was produced against synthesized peptide derived from the human Casein Kinase I alpha around the phosphorylation site of Tyr321 at the amino acid range 287-336
Immunogen Region	287-336 aa
Specificity	Phospho-Casein Kinase I Alpha (Y321) Polyclonal Antibody detects endogenous levels of Casein Kinase I Alpha protein only when phosphorylated at Y321.
Immunogen Sequence	



Western blot analysis of lysates from HUVEC cells, using Casein Kinase I alpha (Phospho-Tyr321) Antibody. The lane on the right is blocked with the phospho peptide.



Western blot analysis of VEC cells using Phospho-Casein Kinase I Alpha (Y321) Polyclonal Antibody