

Anti-Phospho-ZFP36L1-Ser92 antibody (58-107 aa) (STJ90549)

STJ90549

GENERAL INFORMATION

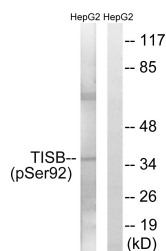
Product Type	Primary antibodies
Short Description	Rabbit polyclonal antibody anti-Phospho-mRNA decay activator protein ZFP36L1-Ser92 (58-107 aa) is suitable for use in Western Blot, ELISA and Immunohistochemistry research applications.
Applications	WB/ELISA/IHC
Host/Source	Rabbit
Reactivity	Human/Mouse/Rat

PRODUCT PROPERTIES

Clonality	Polyclonal
Clone ID	
Concentration	1 mg/mL
Conjugation	Unconjugated
Purification	The antibody was affinity-purified from rabbit antiserum by affinity-chromatography using epitope-specific immunogen.
Dilution Range	WB 1:500-2000 IHC-P 1:50-300 ELISA 2000-20000
Formulation	Liquid in PBS containing 50% Glycerol, 0.5% BSA and 0.02% Sodium Azide.
Isotype	IgG
Storage Instruction	Store at -20°C for up to 1 year from the date of receipt, and avoid repeat freeze-thaw cycles.

TARGET INFORMATION

Gene ID	677
Gene Symbol	ZFP36L1
Uniprot ID	TISB_HUMAN
Immunogen	The antiserum was produced against synthesized peptide derived from the human TISB around the phosphorylation site of Ser92 at the amino acid range 58-107
Immunogen Region	58-107 aa
Specificity	Phospho-TIS11B (S92) Polyclonal Antibody detects endogenous levels of TIS11B protein only when phosphorylated at S92.
Immunogen Sequence	



Western blot analysis of lysates from HepG2 cells, using TISB (Phospho-Ser92) Antibody. The lane on the right is blocked with the phospho peptide.