

Anti-Phospho-NPM1-Thr234 antibody (201-250 aa) (STJ90546)

STJ90546

GENERAL INFORMATION

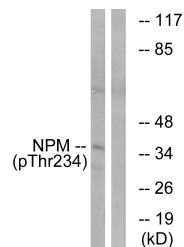
Product Type	Primary antibodies
Short Description	Rabbit polyclonal antibody anti-Phospho-Nucleophosmin-Thr234 (201-250 aa) is suitable for use in Western Blot, Immunohistochemistry, Immunofluorescence and ELISA research applications.
Applications	WB/IHC/IF/ELISA
Host/Source	Rabbit
Reactivity	Human/Mouse/Rat

PRODUCT PROPERTIES

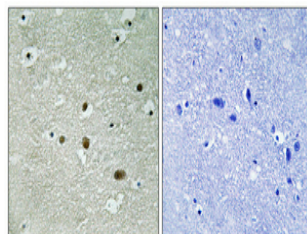
Clonality	Polyclonal
Clone ID	
Concentration	1 mg/mL
Conjugation	Unconjugated
Purification	The antibody was affinity-purified from rabbit antiserum by affinity-chromatography using epitope-specific immunogen.
Dilution Range	WB 1:500-1:2000 IHC 1:100-1:300 ELISA 1:10000 IF 1:50-200
Formulation	Liquid in PBS containing 50% Glycerol, 0.5% BSA and 0.02% Sodium Azide.
Isotype	IgG
Storage	Store at -20°C for up to 1 year from the date of receipt, and avoid repeat freeze-thaw cycles.
Instruction	

TARGET INFORMATION

Gene ID	4869
Gene Symbol	NPM1
Uniprot ID	NPM_HUMAN
Immunogen	The antiserum was produced against synthesized peptide derived from the human NPM around the phosphorylation site of Thr234 at the amino acid range 201-250
Immunogen Region	201-250 aa
Specificity	Phospho-B23 (T234) Polyclonal Antibody detects endogenous levels of B23 protein only when phosphorylated at T234.
Immunogen Sequence	



Western blot analysis of lysates from HeLa cells treated with nocodazole 1ug/ml 18h, using NPM (Phospho-Thr234) Antibody. The lane on the right is blocked with the phospho peptide.



Immunohistochemical analysis of paraffin-embedded Human brain. Antibody was diluted at 1:100 (4A°C overnight). High-pressure and temperature Tris-EDTA, pH8.0 was used for antigen retrieval. Negative control (right) obtained from antibody was pre-absorbed by immunogen peptide.